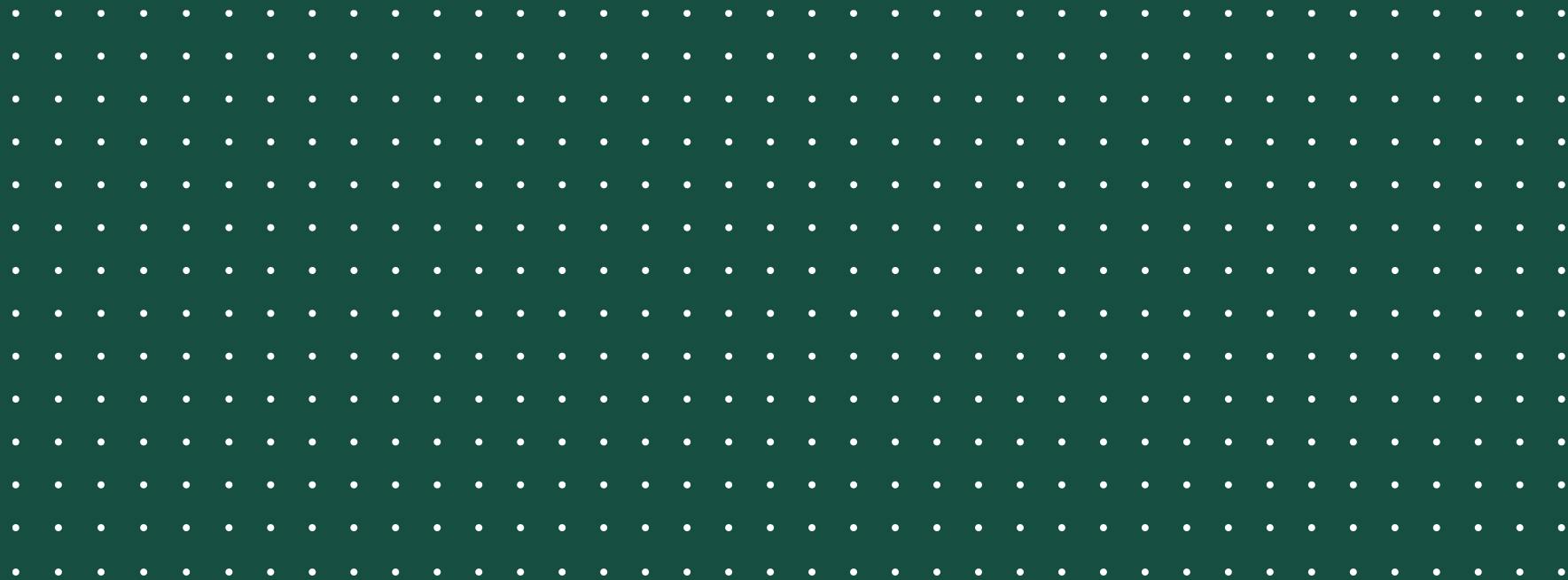




Flokk Soft Seating



# Content

- Flokk philosophy
- Our cornerstones
- Environment
- Our brands
- Market approach
- Soft seating spaces
- Acoustics
- Our Soft Seating Collection

## APPENDIX TO PRESENTATION

- RBM & Offect Co Branding
- RBM New Collection product slides
- Offect Focus product slides

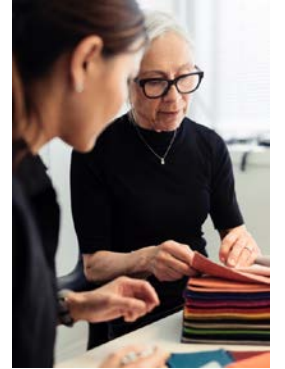
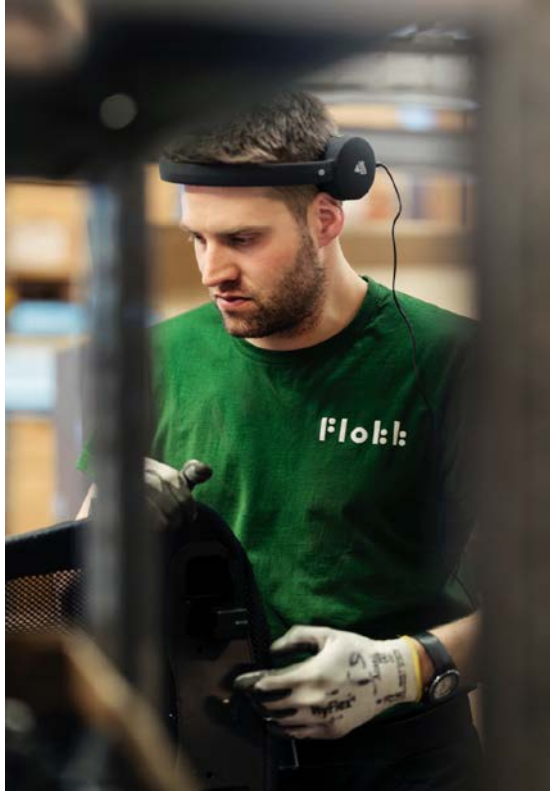


Flokk vision:

Inspire great work



# Design for well-being and performance



**f:lol:l**



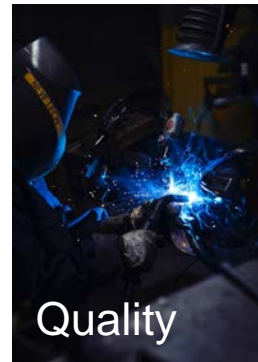
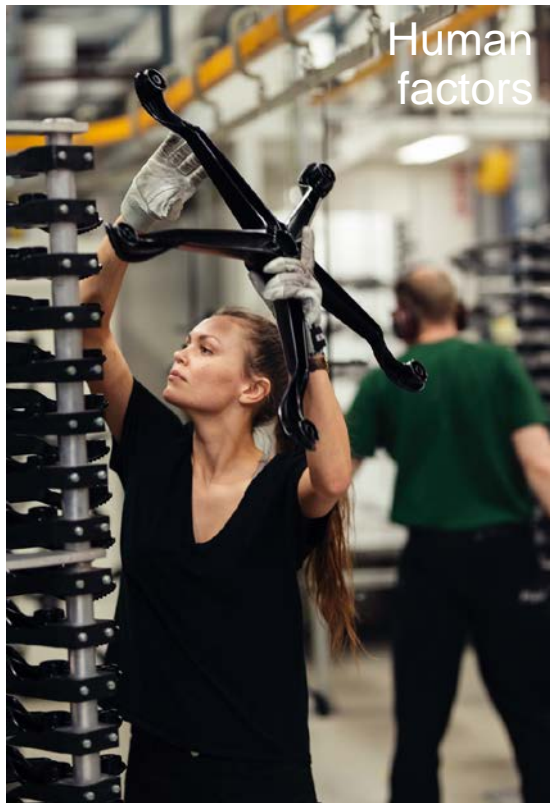
Flokk positioning:

Enabler of leading  
high quality brands





# Our design philosophy



!|o|:|



# Deep Design Thinking



- Health & wellbeing
- Sustainability
- Aesthetic innovations

**f:l:o:l:**



# Creative Collaborations



!o!:





# State of the art production set-up

“I came away from my visit to Scandinavian Business Seating in Rørros, Norway, incredibly impressed with its capabilities for Mass Customization.

Its relentless focus on eliminating inventory and producing and delivering all orders on the same day that it confirms delivery of those orders makes it one of the premier mass customizers in the world”

B. Joseph Pine, January 2013



B. Joseph Pine

Author of “Mass Customization: The New Frontier in Business Competition” (1993), speaker, and management advisor to Fortune 500 companies and entrepreneurial start-ups





# Principles for sustainable design

## 5 circular design criteria

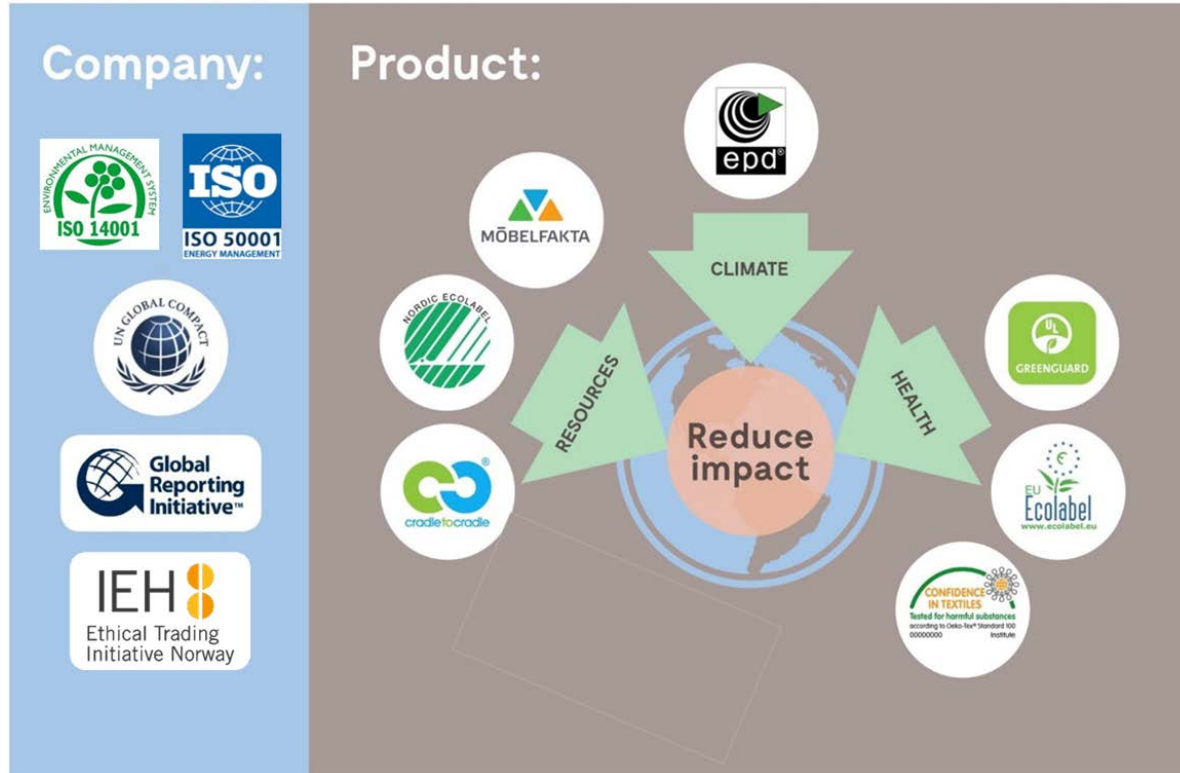
1. Low weight
2. Few components
3. Right choice of materials
4. Long life span
5. Design for disassembly



## 3(III) Focus areas

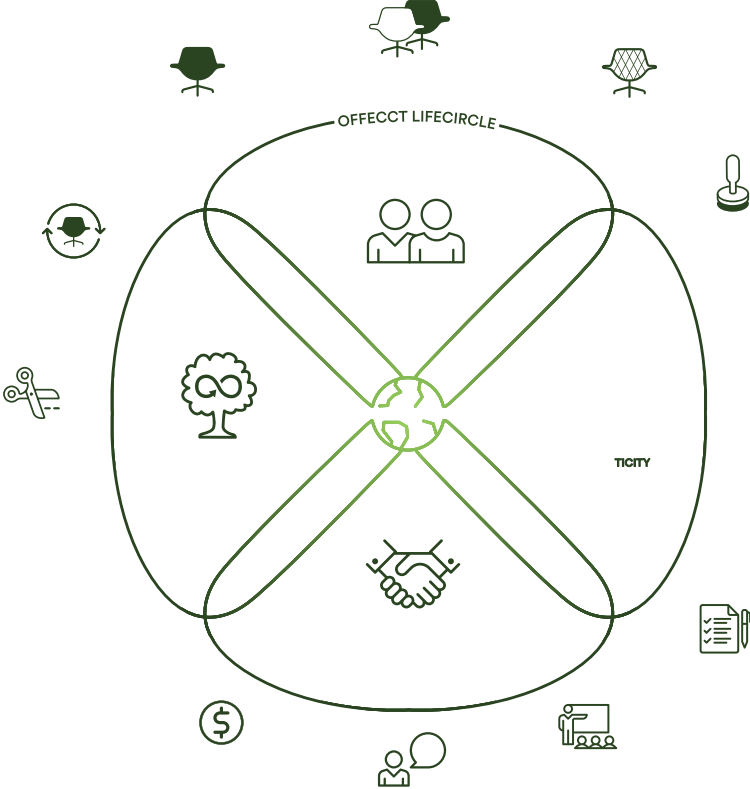
- I. **Climate**  
Lowest possible Carbon footprint and energy consumption
- II. **Resources**  
Reduced use of resources and minimised waste
- III. **Health**  
Reduced use of chemicals and avoid hazardous materials

# Flokk – Labels | Certifications | Standards





# Offecct Lifecircle



# RBM – sustainable products





# This is the foundation, how we enable for strongly differentiated brands:



**HÅG**

**Celebrating Movement**

HÅG merges balanced movement and visual design that ensures movement while seated without having to think about it.



**rh**

**Design for human performance**

RH chairs are a unique blend of design and ergonomic function, where the users need for movement, comfort and support always is the top priority.



**profim**

**Healthy and effective sitting**

Profim knows that true comfort is derived from a combination of ergonomics, technology and aesthetics. These are the things that every work place requires. Every chair too.



**giroflex**

**Design to work**

With a history going back to 1872, Giroflex has always been a front-runner within outstanding Swiss quality and craftsmanship, with focus on high ergonomic and ecological standards.



**bma**  
ergonomics

**Work healthy – sit smart**

At BMA we combine ergonomics and biomechanics with technology and sustainability. BMA Axia® office chairs improve seated posture and make sure that everyone achieves a healthier way of working.



**OFFECCT**

**Design for sustainable meetings**

We develop furniture with sustainable, functional and attractive design for modern meeting places. Our collection enables interiors that stimulate creativity in meetings between people today and tomorrow.



**RBM**

**Bringing life to rooms**

The best ideas are created when people can meet, share and develop together. RBM are chairs & tables bringing life to rooms.

**!|o|k|**



# Stimulating work performance and better health

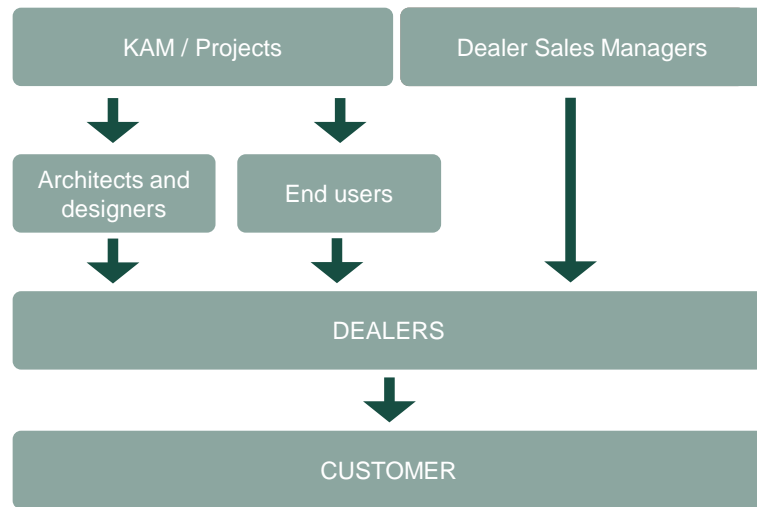


**l:l:l:l**





# Our market approach

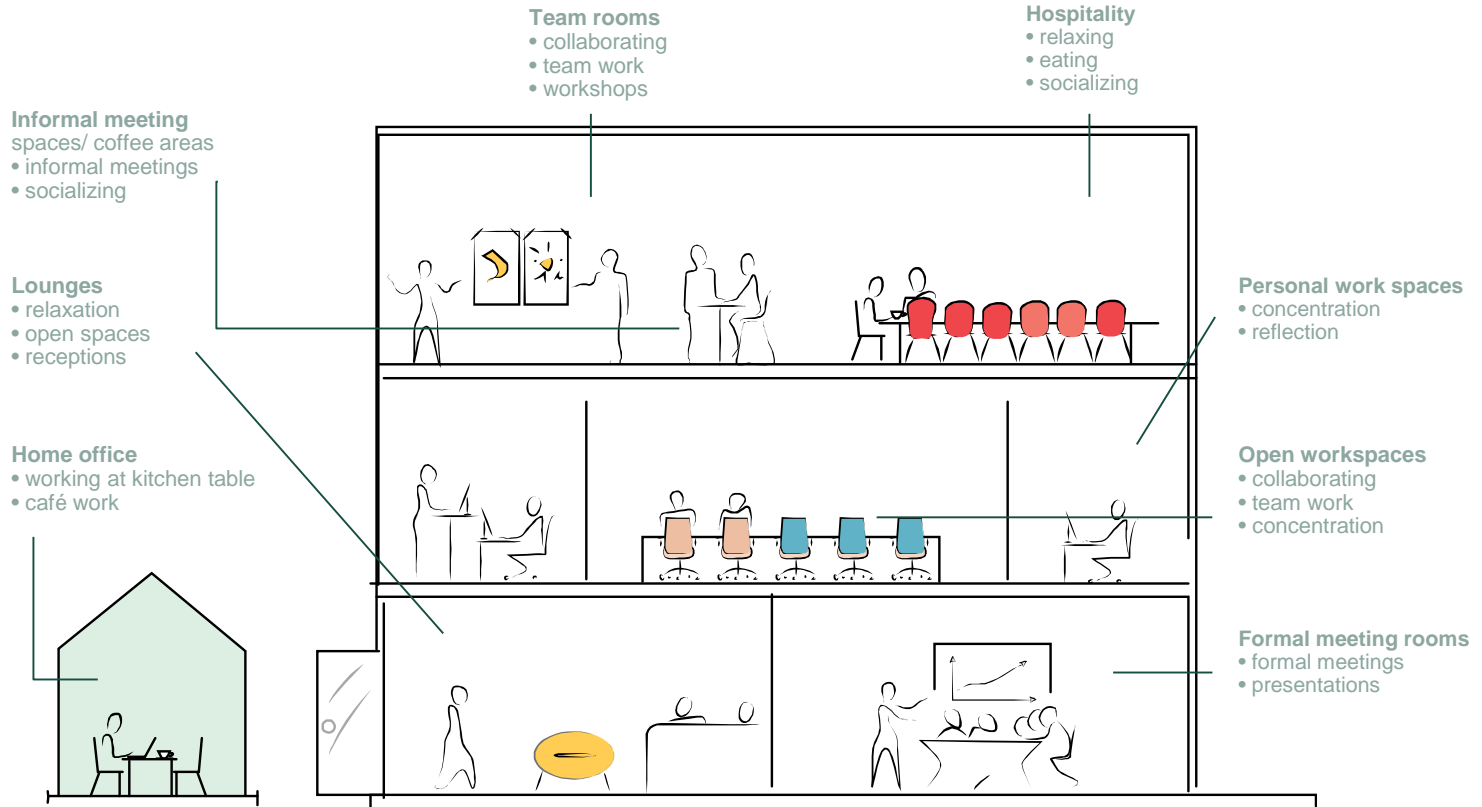


Our KAM approach means working alongside both architects, ergonomists and dealers in creating up the best workspace solutions for our joint customers



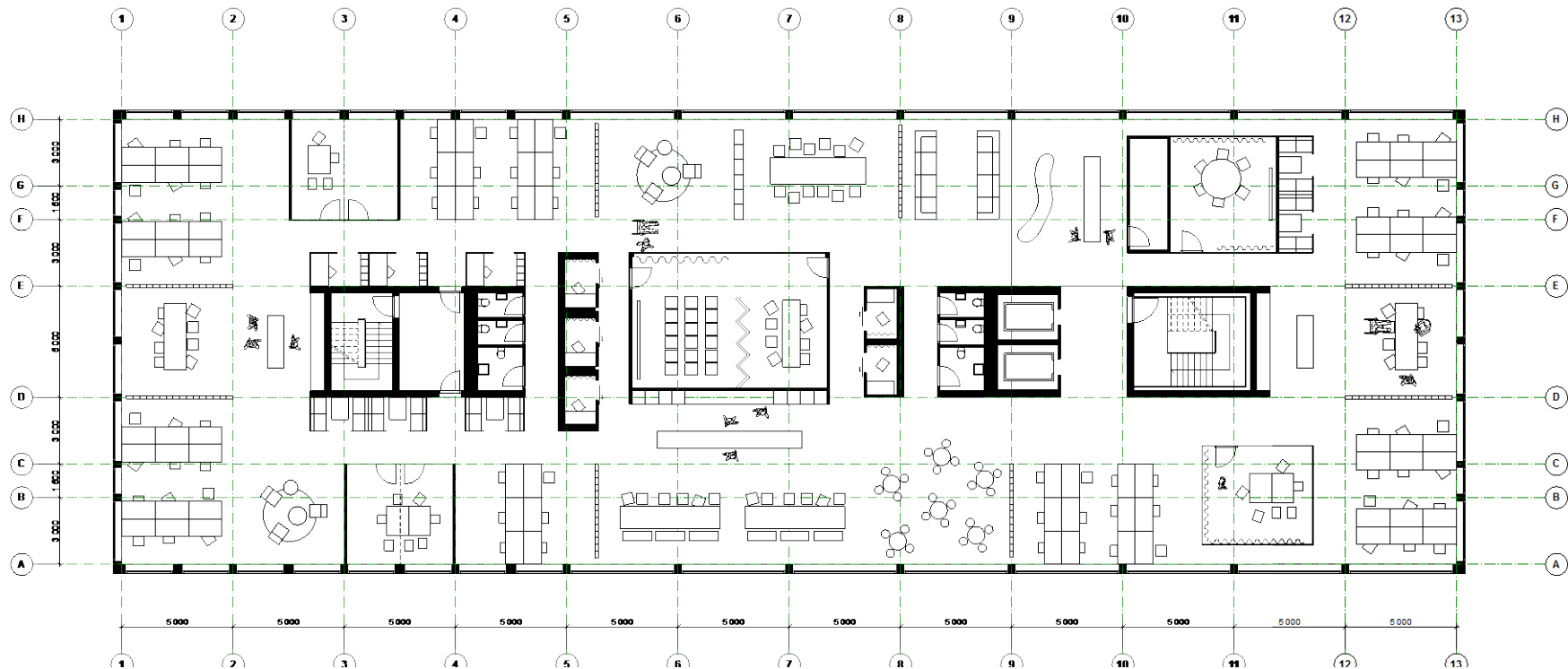


# Where will people work in the future?





# Where will people work in the future?



A modern living room featuring a variety of soft seating options. In the foreground, three colorful, rounded ottomans in red, orange, and pink are arranged on a blue and white patterned rug. Behind them, a light-colored sofa with a purple cushion sits on the rug. To the left, a dark purple armchair is positioned next to a small round table. To the right, a light blue armchair and a grey armchair are also on the rug. The room has large windows with sheer curtains, a wall with a white geometric pattern, and three large, spherical, woven pendant lights hanging from the ceiling. The floor is made of wood.

# Soft Seating spaces



# Lounge / Reception



**l:ol:l:**



# Lounge / Reception



**l:l:l:**



# Informal meeting



**Flol:**



# Informal meeting



**l:l:l:l**



# Team rooms



**!o!:**





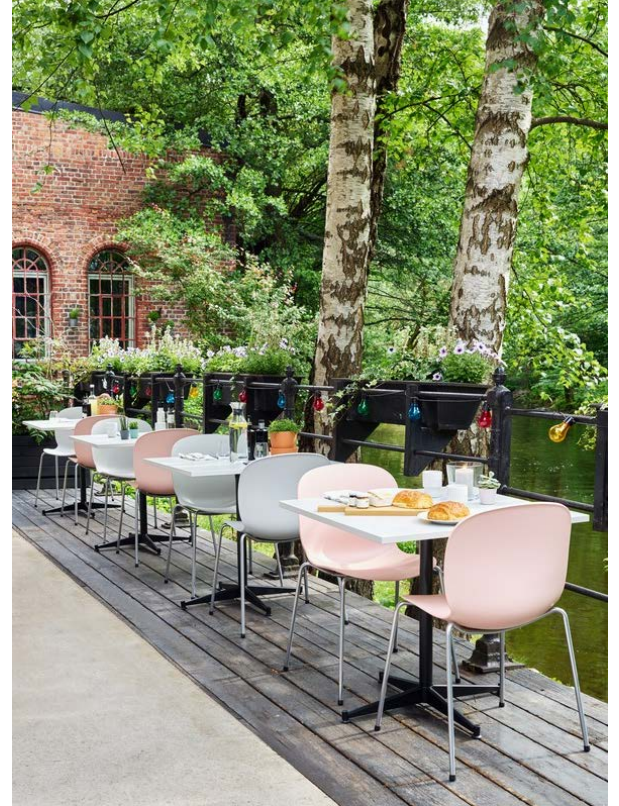
# Team rooms



**l:l:l:l**



# Hospitality



!o!o!



# Hospitality



l:l:l:l



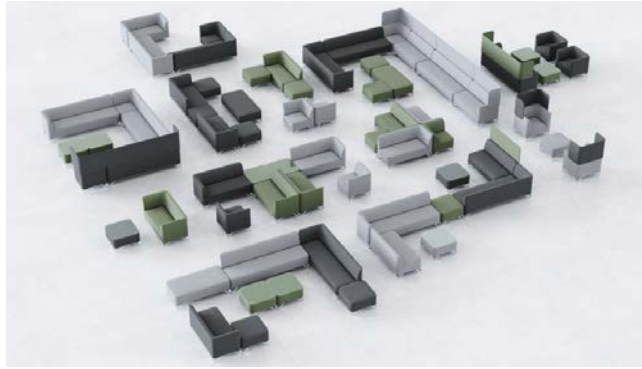
# Hospitality



**!lo:l:**



# Open workspaces





# Formal meeting rooms



**l:l:l:**



# Home office

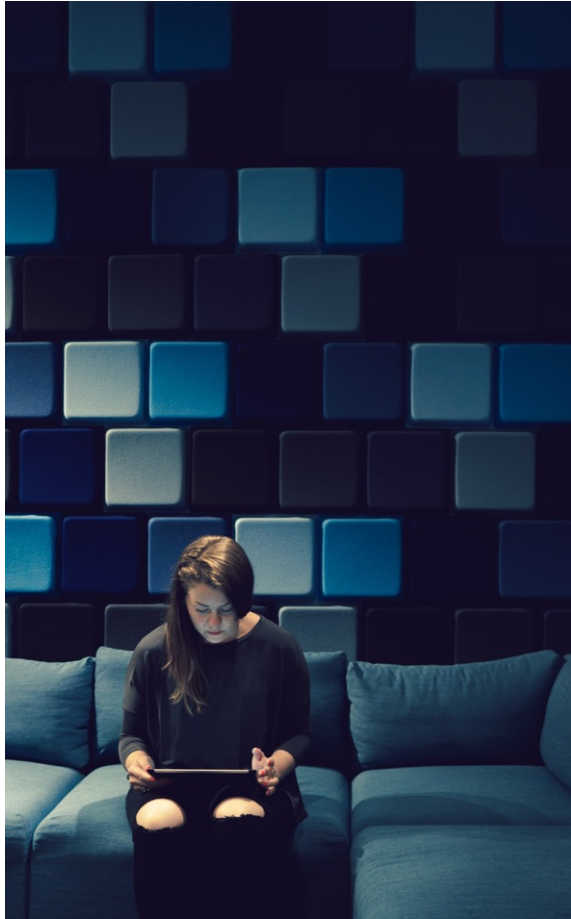


**l:l:l:l**

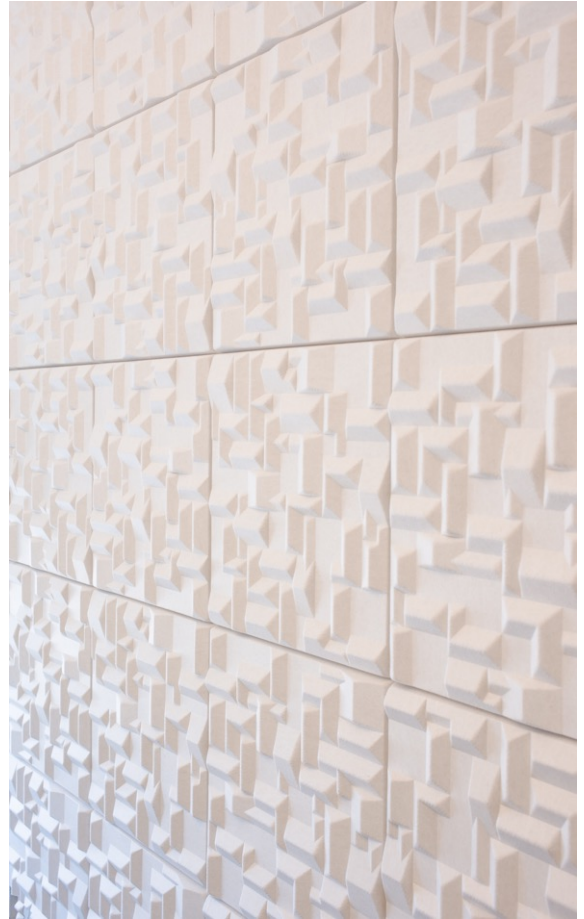
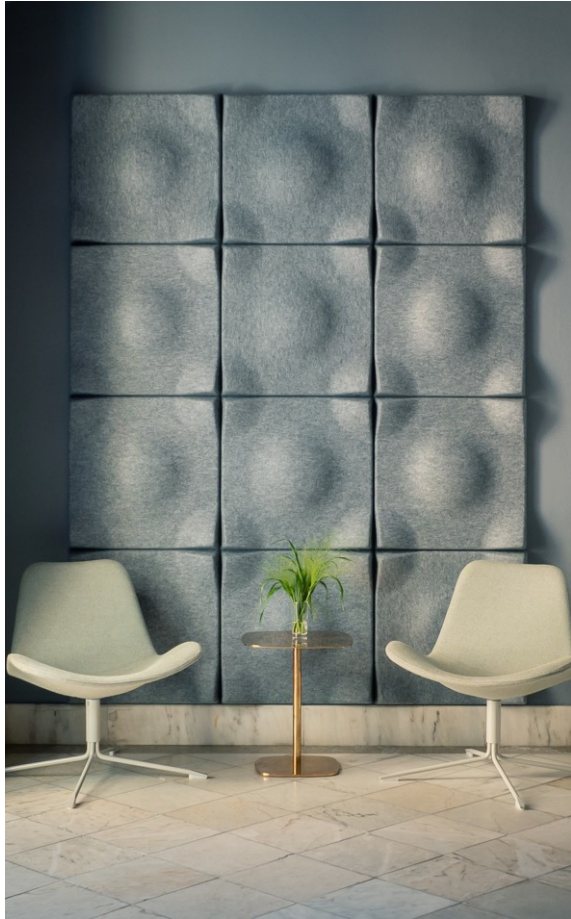


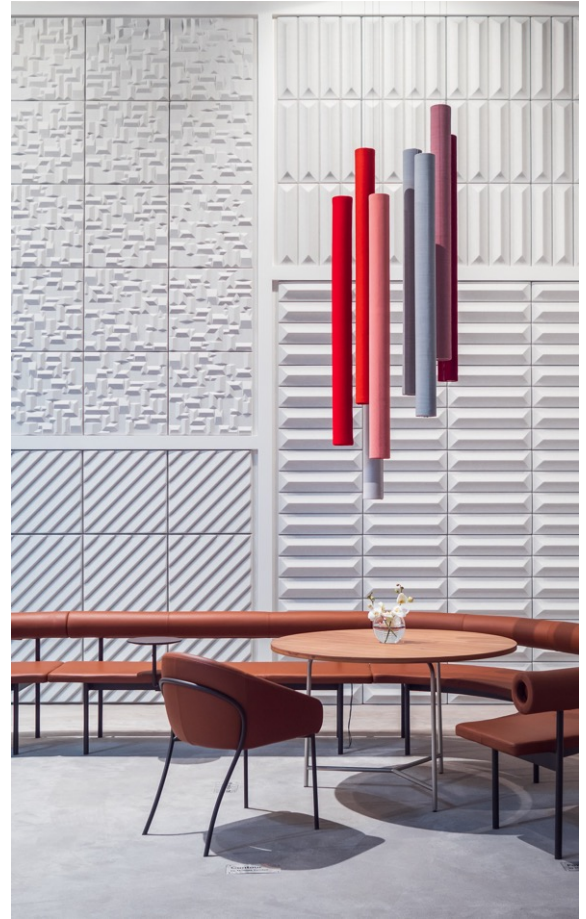
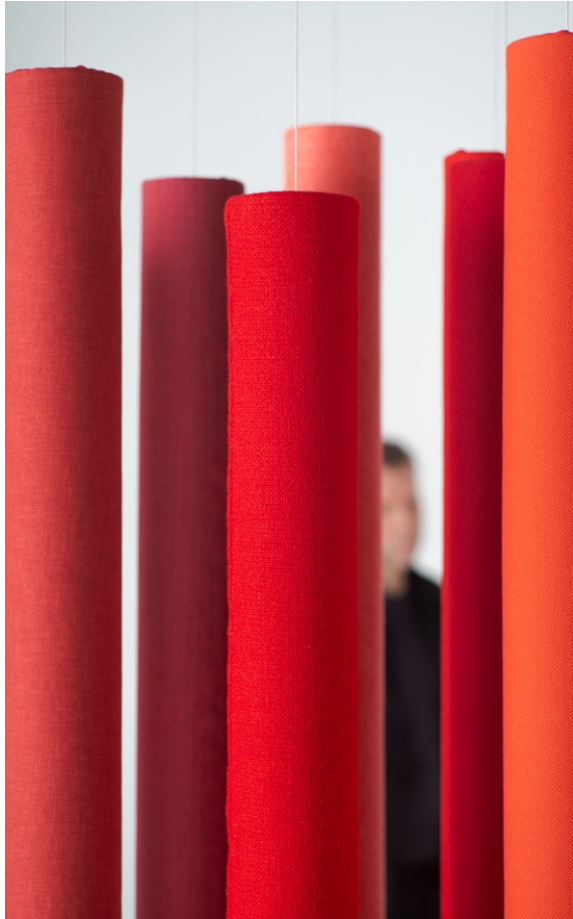
# Acoustics



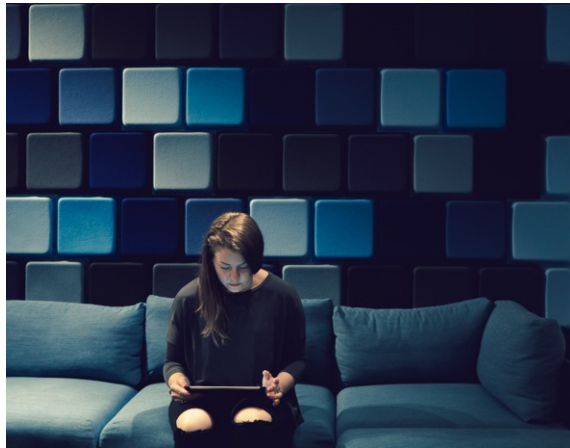














A modern office interior featuring glass-walled meeting rooms and lounge areas. The space is furnished with contemporary green and beige seating, including sofas, armchairs, and high-top stools. The walls are a mix of wood paneling and glass, and the lighting is warm and ambient. A semi-transparent green banner is overlaid across the center of the image, containing the text "Our Soft Seating Collection".

# Our Soft Seating Collection





# RBM New Collection 2021



RBM ElliePro



RBM Fan



RBM Nu



RBM Nu Spin



RBM Mickey



RBM Vancouver  
Otu



RBM Com bar  
and RBM Com



RBM Chic Lounge  
And Chic Air



RBM Chic Table  
and RBM Chic



RBM Noor  
4-leg



RBM Noor  
Sledgebase



RBM Noor  
Functional chair



RBM Noor  
Wooden legs



RBM Noor Up  
Mid-high chair



RBM Ana



RBM Ballet



RBM Ballet  
medium



RBM Bella



RBM Low-back  
Bella



RBM Sam Table



RBM  
Allround



RBM Connect



RBM  
Eminent



RBM Standard  
Folding table



RBM Twisted  
Little star



RBM Ultima



RBM Seven



# RBM New Collection 2021



RBM My Turn sofa



RBM My Turn Table



RBM Vancouver lite



RBM Sam Table



RBM Soft Box



RBM Wall in



# Offecct Original Design Collection 2021



**AIRBERG**  
Jean-Marie Massaud



**AVIGNON**  
Christophe Pillet



**EZY**  
Christophe Pillet



**EZY WOOD**  
Christophe Pillet



**FLOAT HIGH**  
Claesson Koivisto Rune



**FLOAT HIGH LARGE**  
Claesson Koivisto Rune



**FONT**  
Matti Klenell



**NETFRAME**  
Cate & Nelson



**PLAYBACK**  
Claesson Koivisto Rune



**SMALLROOM PLUS  
LOW**  
Ineke Hans



**SMALLROOM PLUS**  
Ineke Hans



**SMALLROOM SELECT**  
Ineke Hans



**YOUNG**  
Michael Young



**BLOCKS**  
Christophe Pillet



**GATE**  
Claesson Koivisto Rune



**GRANDFIELD**  
Christophe Pillet



**LUCY**  
Lucy Kurrein



**MEET**  
Fattorini+Rizzini+Partners



**PLAYBACK**  
Claesson Koivisto Rune

# Offecct Original Design Collection 2021



**BLOCKS**  
Christophe Pillet



**DUNE**  
Front



**ISLANDS**  
Jean-Marie Massaud



**LUCY**  
Lucy Kurrein



**OSAKA**  
Teruhiro Yanagihara



**OSAKA**  
Teruhiro Yanagihara



**OSAKA**  
Teruhiro Yanagihara



**SOUFFLÉ**  
Cecilie Manz



**WAKA**  
David Trubridge



**LUCY**  
Lucy Kurrein



**AIRBERG**  
Jean-Marie Massaud



**AVIGNON**  
Christophe Pillet



**BABLED**  
Emmanuel Babled



**BLOCKS**  
Christophe Pillet



**BOND**  
Jean-Marie Massaud



**EZY**  
Christophe Pillet

# Offecct Original Design Collection 2021



**EZY LARGE**  
Christophe Pillet



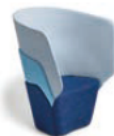
**EZY WOOD**  
Christophe Pillet



**FLOAT HIGH**  
Claesson Koivisto Rune



**FLOAT HIGH LARGE**  
Claesson Koivisto Rune



**LAYER**  
Läufer + Keichel



**MAKI**  
Jin Kuramoto



**MOMENT**  
Khodi Feiz



**MURANO**  
Luca Nichetto



**NETFRAME**  
Cate & Nelson



**OYSTER HIGH & LOW**  
Michael Sodeau



**OYSTER WOOD HIGH & LOW**  
Michael Sodeau



**PAL HIGH & LOW**  
Claesson Koivisto Rune



**PALMA**  
Khodi Feiz



**PALMA WOOD**  
Khodi Feiz



**PLAYBACK**  
Claesson Koivisto Rune



**QUEEN**  
Olle Anderson



**SATELLITE**  
Richard Hutten



# Offecct Original Design Collection 2021



**YOUNG**  
Michael Young



**SHIFT WOOD**  
Daniel Debiasi &  
Federico Sandri



**SOLITAIRE**  
Alfredo Häberli



**SPOON HIGH & LOW**  
Monica Förster



**VARILOUNGE**  
Christophe Pillet



**BERGEN**  
Hallgeir Homstvedt



**BIKE**  
Monica Förster



**BOND**  
Jean-Marie Massaud



**BOP**  
Knudsen Berg Hindenes



**BOP WOOD**  
Knudsen Berg Hindenes



**CONSIST**  
Thomas Sandell



**CORNFLAKE**  
Claesson Koivisto Rune



**EZY HIGH & LOW**  
Christophe Pillet



**EZY HIGH & LOW**  
Christophe Pillet



**EZY WOOD HIGH &  
LOW**  
Christophe Pillet



**JACKET**  
Claesson Koivisto Rune



**JIN**  
Jin Kuramoto

# Offecct Original Design Collection 2021



**KALI**  
Jasper Morrison



**LITE**  
Broberg & Ridderstråle



**PALMA MEETING**  
Khodi Feiz



**PALMA MEETING WOOD**  
Khodi Feiz



**PHOENIX**  
Luca Nichetto



**PHOENIX**  
Luca Nichetto



**PHOENIX**  
Luca Nichetto



**PHOENIX**  
Luca Nichetto



**QUICK**  
Olle Anderson



**QUILT**  
Olle Anderson



**SHEER**  
Monica Förster



**TAILOR**  
Louise Hederström



**AMAZONAS**  
Claesson Koivisto Rune



**ARCHIPELAGO**  
Michael Sodeau



**BIRD**  
Broberg & Ridderstråle



**BOND**  
Jean-Marie Massaud



**CIRCUS**  
Formjord



**CORNFLAKE**  
Claesson Koivisto Rune

# Offecct Original Design Collection 2021



**CORNFLAKE**  
Claesson Koivisto Rune



**EZY**  
Christophe Pillet



**GRANDFIELD**  
Christophe Pillet



**GRIP**  
Satyendra Pakhalé



**ISLANDS**  
Jean-Marie Massaud



**ISLANDS**  
Jean-Marie Massaud



**KALI**  
Jasper Morrison



**LITE**  
Broberg & Ridderstråle



**MARKELIUS 01**  
Sven Markelius



**NOBIS**  
Claesson Koivisto Rune



**ON POINT**  
Mattias Stenberg



**ON POINT HIGH**  
Mattias Stenberg



**ON POINT MEDIUM**  
Mattias Stenberg



**OSAKA**  
Teruhiro Yanagihara



**OSAKA**  
Teruhiro Yanagihara



**OSAKA**  
Teruhiro Yanagihara



**SNOWFLAKES**  
Claesson Koivisto Rune



**SOUFFLÉ**  
Cecilie Manz



# Offecct Original Design Collection 2021



**SURF**  
Maximilian Schmahl



**TOOL**  
Studio Irvine



**WIND**  
Jin Kuramoto



**WIND**  
Jin Kuramoto



**WIND**  
Jin Kuramoto



**WIND**  
Jin Kuramoto



**CLOUD**  
Monica Förster



**NOTES**  
Luca Nichetto



**SOUNDSTICKS®**  
Andrea Ruggiero



**MEMBRANE**  
David Trubridge



**WIND**  
Jin Kuramoto



**WIND**  
Jin Kuramoto



**CIRCUS**  
Formfjord



**GREEN DIVIDER**  
Louise Hederström



**GREEN ISLANDS**  
Jean-Marie Massaud



**GREEN PADS**  
Luca Nichetto



**GREEN PEDESTALS**  
Front



**GREEN PEDESTALS**  
Front

# Offecct Original Design Collection 2021



**BOP**  
Knudsen Berg Hindenes



**BOP WOOD**  
Knudsen Berg Hindenes



**CARRY ON**  
Mattias Stenberg



**CORNFLAKE**  
Claesson Koivisto Rune



**EZY**  
Christophe Pillet



**MOVE ON HIGH & LOW**  
Mattias Stenberg



**HANGER**  
Neri&Hu

# Offecct Original Design Collection 2021



**SOUNDWAVE® BELLA**  
3XN



**SOUNDWAVE® BOTANIC**  
Mario Ruiz



**SOUNDWAVE® CERAMIC**  
Thomas Sandell



**SOUNDWAVE® ENNIS**  
Frank Lloyd Wright®



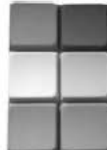
**SOUNDWAVE® FLO**  
Karim Rashid



**SOUNDWAVE® GEO**  
Ineke Hans



**SOUNDWAVE® LUNA**  
Teppo Asikainen



**SOUNDWAVE® PIX**  
Jean-Marie Massaud



**SOUNDWAVE® SCRUNCH**  
Teppo Asikainen



**SOUNDWAVE® SKY**  
Marre Moerel



**SOUNDWAVE® STRIPES**  
Richard Hutten



**SOUNDWAVE® SWELL**  
Teppo Asikainen



**SOUNDWAVE® WALL**  
Christophe Pillet



**SOUNDWAVE® WICKER**  
Wingårdh & Wikerstål



**SOUNDWAVE® VILLAGE**  
Claesson Koivisto Rune

# APPENDIX TO PRESENTATION

- RBM & Offecct Co Branding
- RBM New Collection product slides
- Offecct Focus product slides



More life to rooms with RBM and  
OFFECCT



RBM Wall In  
Offecct Nobis  
Offecct Carry On  
RBM Seven



RBM Ellie Pro  
Offecct Nobis  
Offecct Maki  
RBM Seven



Offecct On Point  
Offecct Move On  
RBM Soft Box





RBM Nu  
RBM SAM table  
Offecct Soundwave



Offecct Smallroom  
RBM Allround  
RBM Mickey



RBM Softbox  
Offecct Archipelago  
Offecct Oyster



Offecct Grandfield  
Offecct Archipelago  
Offecct Soundsticks  
RBM Vancouver Oto



# RBM New Collection



Bringing life to rooms

# RBM Ellie Pro™

RBM ElliePro skiller sig ud fra mængden på arbejdspladsen. Stolen kombinerer komforten i en lænestol med ergonomien og funktionaliteten fra en kontorstol. Dens buede linjer skaber en hyggelig atmosfære og bidrager med at blødgøre de skarpe linjer i et kontormiljø.

På grund af den intuitive reguleringsmekanisme, der er diskret integreret i stolen, kan den let og hurtigt tilpasses til individuelle behov. Et bredt udvalg af stelfarver og tekstiler giver mulighed for at finde et perfekt match til enhver indretning - kreativ eller klassisk.

Det 4-stjernede fodkryds i aluminium er en perfekt løsning til moderne konferencerum. Stolen med metalstel ser fantastisk godt ud i undervisningslokaler eller på kontoret og versionen med træstel ser eksklusiv ud i hotellobbyen eller i loungeområdet.

German Design Award Winner 2020.

Design af: ITO Design

- Indbygget synkron-selvmechanisme i sædet
- 2 højder med ryglæn (10/20)
- 4-stjernet høj alu stel: White, Black, Steelgrey, Polished alu.
- 4-stjernet alu stel: White, Black, Metallic, Steelgrey
- Træben i 6 forskellige bejdse/lakfarver
- Tekstiler fra Flokk tekstilprogram



20 HST



10 V3



20 HW



# RBM Fan

Stille og sofistikeret.

RBM Fan har elegance i alle dens former. Stolens elegante linjer med dens præcise syninger er stolens mest karakteristiske træk. Lav dit eget unikke udseende ved at lege med søm, tekstiler og farver. RBM Fan er en universel stol med en skal, der lavet af formstøbt koldskum. Stolen kan bruges både på kontoret, derhjemme, i konferencelokalet eller i receptionen.

Lænestolen fås med 4-grenet fodkryds med hjul, et 4-grenet drejbart fodkryds med glidere, et 4-grenet fodkryds med glidere, med medestel eller med træben.

Design af: Piotr Kuchciński

- Skal i formstøbt koldskum
- 4-stjernet alu. fodkryds, drejbar med hjul: Black, Steelgrey, Metalsilver
- 4-stjernet alu. fodkryds, drejbar med glidere: Black, Steelgrey, Metalsilver
- 4-stjernet alu. fodkryds med glidere: Black, Steelgrey, Metalsilver
- Medestel alu.: Black, Steelgrey, Metalsilver
- Træben i 10 forskellige bejdse/lakfarver
- Tekstiler fra Flokk tekstilprogram
- 5 års garanti



10 HC



10 HS



10 H



10 V



10 HW



# RBM Nu

RBM Nu kollektionen er et vidunderligt møbel til dit møde ved konferencebordet eller i loungen. Stolen er både målrettet formelle arbejdsmiljøer og loungemiljøer, hvor man kan sidde og slappe af.

Kollektionen inkluderer stole med 4-stjernet drejbart fodkryds på hjul, 4-stjernet drejbart fodkryds uden hjul, stel med 4 ben i metal med glidere, medestel samt stel på 4 ben i træ.

Design af: Paul Brooks

- 4-stjernet alu fodkryds med glidere: Black, Steelgrey, Metalsilver
- 4-stjernet alu fodkryds, drejbar med glidere: Black, Steelgrey, Metalsilver
- Medestel alu: Black, Steelgrey, Metalsilver
- Træben i 5 forskellige bejdse/lakfarver
- Tekstiler fra Flokk tekstilprogram
- 5 års garanti



20 HS



20  
FZ



20 V3



20 HW



20 HC





# RBM Nu Spin

RBM Nu Spin er kompakt tænkning til sociale rum med et twist.

Stolen er alsidig med en virkelig ren form, der er ideel til både formelle og sociale områder. Den komfortable skalform passer godt til brugerens silhuet. Stolen omdanner områder med begrænset plads til et sted for samtale.

RBM Nu Spin kan kombineres med to forskellige tekstiler eller farver. Desuden kan den tilpasses med en automatisk returfunktion, hvilket gør den ideel i loungeområder, der skal holdes pæne og ordnede.

Design af: Paul Brooks

- RBM Nu Spin 20 FUS er udstyret med en automatisk returfunktion, behagelig i brug og nem at holde pæn og ordnet
- Mulighed for at kombinere to tekstiler eller farver på en enkelt stol
- Tekstiler fra Flokk tekstilprogram
- 5 års garanti



20 FU



20 FUS



# RBM Mickey

RBM Mickey er den perfekte sidde­løsning for dem, der søger for en mere aktiv tilgang til arbejdet.

Puffen drejer og svinger fra side til side og har en justerbar højdeindstilling. Den giver god støtte under stående arbejde, men kan tjene mange forskellige behov, såsom hurtige møder ved counterbordet eller ved siden af et skrivebord.

Med det specielle håndtag kan puffen let højdejusteres eller flyttes rundt i en håndvending. RBM Mickey kan bestilles i et væld af udtryksfulde tekstiler og farver, der kombineres med neutrale plastfarver.

RBM Mickey er ergonomisk designet og den kan benyttes til aktivt skrivebordsarbejde, både siddende og stående. Den følger let din siddestilling med en 10-graders hældning til begge sider. Disse stillingsændringer under arbejdet giver aktiv støtte til ryggen.

- Sædet bevæger sig fra side til side med en 10-graders hældning for aktiv støtte og har en højdejustering, der går fra en lav puf til en høj stå-støttestol
- Tre plastfarver på basen: Light Grey (RAL 7047), Grey (RAL 7043), Beige (RAL 7036)
- Med det specielle håndtag kan puffen let højdejusteres eller flyttes rundt i en håndvending
- Kan bestilles i et væld udtryksfulde tekstiler og farver, der kombineres med neutrale plastfarver
- 5 års garanti



# RBM Vancouver Oto

RBM Vancouver Oto er en kollektion af puffer og borde designet til at supplere RBM Vancouver Lite. Pufferne og bordene fås i to forskellige størrelser med runde og firkantede former, der let supplerer vores andre produktkollektioner i konferencelokaler eller break-out områder.

- Specielle koblinger gør det muligt at kombinere de firkantede puffer i forskellige konfigurationer og figurer
- Tekstiler fra Flokk tekstilprogram
- 5 års garanti



# RBM Com

RBM Com har store begivenheder i tankerne. Den enkle sædeskal i krydsfinér fås i forskellige træ- og laminat (HPL) overflader og polstrede udgaver, som giver et ekstra komfortniveau.

RBM Com leveres med 4 ben eller medestel. Den er velegnet til mange miljøer såsom forsamlingshuse, mødelokaler og cafeterier. Kollektionen tilbyder et udvalg af tilbehør, der gør det lettere at nummerere, stable eller sammenkoble stole i rækker. Disse funktioner er nyttige, når man organiserer store begivenheder.

Design af: Paul Brooks

- Den enkle sædeskal i krydsfinér fås i forskellige træ- og laminat (HPL) overflader
- RBM Com fås i flere udgaver med 4 ben, medestel, cantilever og som tre eller fire personers bænke både som polstrede og upolstrede versioner
- Tekstiler fra Flokk tekstilprogram
- 25 varianter af RBM Com og Com Bench
- 5 års garanti



K12H



K12H 2P



K12V3 2P



K22V2



K22H



K32H 2P



K42V3 2P



K22L3



# RBM Com Bar

RBM Com Bar stolen handler om at samles.

Med siddehøjde på 80 cm er den perfekt til høje borde og bordplader, der har en højde mellem 104 og 110cm. Stolen leveres med sædeskal i tre forskellige overflader: Krydsfinér, krydsfinér med polstret sæde eller fuldpolstret. Sædeskallen fås i standard lakfarver, natur finér eller laminat (HPL).

Design af: Paul Brooks

- Siddehøjde på 80cm er den perfekt til høje borde og bordplader, der har en højde mellem 104 og 110cm
- Stelfarver: Black, Steelgrey, Metalsilver
- Den firkantede skal fås i tre forskellige overflader: krydsfinér, krydsfinér med polstret sæde eller fuldpolstret
- Tilvalg: Skriveplade, rækkekobling, rækkeumre og stolevogn
- Tekstiler fra Flokk tekstilprogram
- 5 års garanti



K12CV



K22CV



K42CV



# RBM Chic

RBM Chic er enkel raffinement og klassisk design. En kollektion stole, der bruger subtile former og bløde linjer for at give den visuelle effekt af lethed. RBM Chic er kompakt, enkel og klassisk i sin form og fås med tynde metalrammer, træben eller med 4-grenet fodkryds eller som lænestol og barstol.

RBM Chic er designet til caféer, restauranter, loungeområder eller venteværelser. RBM Chic lænestolen er designet til afslapning og har en karakteristisk lavtsiddende komfortabel form, der byder brugerne velkommen til at nyde uformelle samtaler.

Når RBM Chic er monteret på fodkryds med returdrej, som er den ideel til områder, der skal holdes pæne og ordnede

Design af: Christophe Pillet

- RBM Chic leveres i 11 varianter med flere forskellige steltyper: 4-benet metalstel, træben, 4-stjernet fodkryds, barstol og lænestol
- Stålstel i farverne Black, White, Steelgrey, Graphite og Metalsilver
- 4-stjernet fodkryds i poleret aluminium
- Træben i 5 forskellige bejds / lakfarver
- Fuldpolstret - Tekstiler fra Flokk tekstilprogram
- 5 års garanti



21HW

20H

20F

10FUS

20CH

20CR



# RBM Chic Air

RBM Chic Air er skabt til at udforske det øjeblik, hvor det lækre design møder blødhed.

Den perfekte kombination for sociale områder. Kollektionen er skabt med skarpe geometriske former kombineret med en subtil profil på stellet. Det velgennemtænkte former gør stolene iøjnefaldende i enhver indretning.

For at give møblerne et mere individuelt udseende kan to forskellige tekstiler kombineres med hinanden og der er en række muligheder at vælge imellem – inklusiv høj eller lav ryg eller stole med eller uden armlæn samt bænke.

RBM Chic Air er tildelt Red Dot Award 2017: Produktdesign, for et fremragende design

Design af: Christophe Pillet

- Høj eller lav ryg, med/uden armlæn og bænke
- RBM Chic Air leveres med 4 ben i stål eller med træben
- Stålstel i farverne Black, White, Steelgrey, Graphite, Metallsilver
- Træben i 5 forskellige bejdse / lakfarver
- Fuldpolstret med mulighed for at kombinere to forskellige tekstiler
- Tekstiler fra Flokk tekstilprogram
- 5 års garanti



C21H

C20H

B20H

A20H

A10H

A10HW

A11H



# RBM Chic Lounge

RBM Chic Lounge er skabt til at udforske det øjeblik, hvor det lækre design møder blødhed. Den perfekte kombination for sociale områder.

Kollektionen er kendetegnet ved minimalistisk, elegant design, som domineres af subtile former, der passer perfekt i de fleste typer miljøer med bløde møbler. Hvert møbel er lavet med den største omhu og giver muligheden for at kombinere to forskellige tekstiler eller skind med hinanden. Med sin lette form er RBM Chic Lounge perfekt at slappe af i.

RBM Chic Lounge stol består af en metalramme dækket af polyurethanskum. Den fås med to versioner af ryglænen - lav og høj. Kollektionen indeholder også en elegant fodstøtte og pude. Stolene kan fås med en metalramme eller med et 4-stjernet fodkryds, der fås i forskellige farver: Black, Steelgrey og Metalsilver.

RBM Chic Air Lounge er tildelt Red Dot Award 2019  
Design af: Christophe Pillet

- Høj eller lav ryg
- Stel med meder eller 4-stjernet fodkryds
- Stel i farverne Black, White, Steelgrey, Graphite, Metalsilver
- Rygpude som tilvalg
- Fuldpolstret med mulighed for at kombinere to forskellige tekstiler
- Tekstiler fra Flokk tekstilprogram
- 5 års garanti



A10V3+CU



A10F



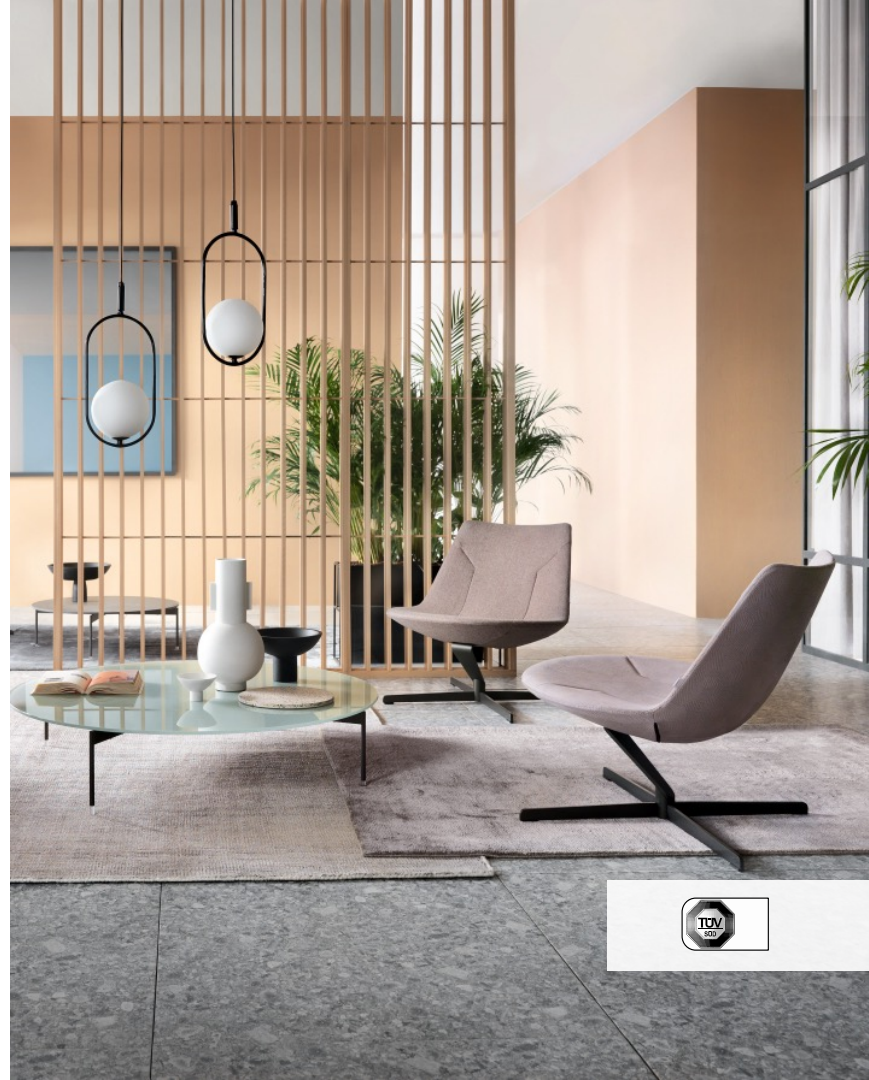
A20V3



A20F



PV3





# RBM Chic Table

RBM Chic Table er det perfekte bord at mødes over.

RBM Chic Table kollektionen har en bred række designs at vælge imellem: Restaurantversion på metalstel, høje udgaver på flade fødder eller lave sofaaborde. Hvert bord i kollektionen fås i en række højder og overflader herunder træ dækket med finér af høj kvalitet, metal, glas og keramik. Dette skaber uendelige muligheder for indretning.

RBM Chic bordstel fås i Black, White, Steelgrey og Metalsilver. Bordplader i metal og keramik plader fås i farver, der matcher stellet, hvilket giver mulighed for minimalistiske og ensartede borde.

Design af: Christophe Pillet

- Chic borde fås i forskellige højder og steltyper med et bredt udvalg af bordplader i forskellige størrelser
- Støbejernsstel fås i White, Grey, Graphite
- Bordoverflader i naturfiner, metal, glas eller keramik
- Bordoverflader i metal eller keramik fås i farver, der matcher stellet
- Bordstel kan også bestilles separat
- 5 års garanti



# RBM My Turn Sofa

Enkle former og robuste linjer med RBM MyTurn Sofa.

Serien er kendetegnet ved sin minimalistiske stil, luksuriøse finish og sine puder, der er fyldt med skum efter nøje udvalgte parametre. Disse aspekter skaber sammen en unik blød siddeoplevelse.

RBM My Turn serien består af en lænestol og en sofa i to størrelser. Det er en perfekt løsning til elegante kontormiljøer, i receptioner, lobbyer eller på gangarealer.

Design af: Paul Brooks

- Lænestol med stel på fire ben eller på meder
- Sofa til 2 eller 3 personer med stel på fire ben eller på meder
- Tekstiler fra Flokk tekstilprogram
- 5 års garanti



10H



10V



20H



30V



# RBM My Turn Sofa table

RBM MyTurn Table har en moderne og minimalistisk stil.

Det rektangulære træbord fås med medestel eller stel på fire ben med finish i Black, Steelgrey eller Metalsilver og med forskellige flotte bordoverflader.

RBM MyTurn bordene er også en perfekt løsning til elegante kontorindretninger, i receptioner, lobbyer og på gangarealer.

Design af: Paul Brooks

- Borde, små (85x30x85 cm), store (120x30x85 cm)
- Lave borde med 4 ben eller på meder (højde 140 mm)
- Stel i Steelgrey, Metalsilver og Black (20 x 20 mm)
- Bordplader i laminat (HPL) i White, Black og Grey
- Naturfiner i 5 forskellige træfarver
- Hårde glider til bløde gulve og filtglider til hårde gulve
- 5 års garanti



S2H



S2V



S1H



S1V



# RBM Vancouver Lite Sofa

Med faste linjer og kubiske former er RBM Vancouver kollektionen født til at skille sig ud.

Vancouver Lite serien består af lænestole og sofaer med kubiske former, der passer perfekt ind i stilen på moderne kontorer. Elegant design og omhyggeligt valg af materialer giver Vancouver Lite en flot æstetik med øje for detaljen.

Vancouver Lite passer perfekt til modtagelsesområder, åbne offentlige kontorlandskaber eller venteområder. Med skillevægge monteret kan man afholde private møder i stilhed.

Kollektionen kompletteres med en række moderne, runde og firkantede puffer - RBM Vancouver Oto.

- Lænestol med 4 ben (H) eller cantilever (V) ben i Steelgrey eller Metalsilver
- 2-personers sofa md 4 ben eller cantilever stel i Steelgrey eller Metalsilver
- 2,5-personers sofa md 4 ben eller cantilever stel i Steelgrey eller Metalsilver
- 3-personers sofa md 4 ben eller cantilever stel i Steelgrey eller Metalsilver
- 4 ben og cantilever stel til alle lænestole og sofaer, der skal forbindes med skillevægge
- Sæt med skillevægge, der kan forbindes med alle lænestole og sofaer
- Separat væg
- Tekstiler fra Flokk tekstilprogram
- 5 års garanti



VL1 V



VL2 V



VL2 VW + VL W2



VL3 HW + VL W3



# RBM Softbox

RBM SoftBox kan beskrives i tre ord: Blødhed, præcision og modularitet.

Hjørneelementet gør det muligt for brugeren at arrangere RBM SoftBox i enhver konfiguration for at kunne tilpasse med andre designelementer. Sæderne er understøttet af subtile 'bånd' i aluminium eller træ, som ser flotte ud og giver en stabil bund.

Kollektionen består af forskellige elementer: Puffer, en lænestol, sofa med to og tre sæder med eller uden armlæn og et firkantet bord.

Design af: Paul Brooks

RBM Softbox sofasystemet består af:

- Hjørneelement
- Enkelt og dobbelt puffer
- Lænestol
- To- og tre-personers sofa (med en eller to armlæn eller uden)
- Ben i aluminium i farverne Black, Steelgrey, Metalsilver
- Træben i 5 forskellige bejse / lakfarver
- Firkantet bord i hærdet glas G1, laminat (HPL) i LW01 White, LW02 Black, LW04 Grey og natur finer HM10 Bleached oak, HM11 Classic oak, HM12 Cardinal oak, HM20 Venge classic
- Mediaport tilgængelig som tilvalg
- Tekstiler fra Flokk tekstilprogram
- 5 års garanti



# RBM Wall In

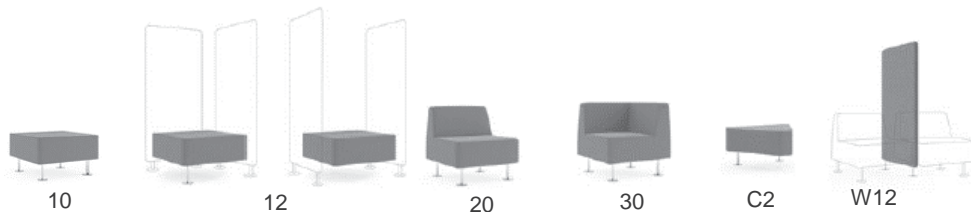
RBM Wall In tilbyder pragmatiske løsninger til en forbedret hverdagsoplevelse.

RBM Wall In er et modulært sofasystem, der er kendetegnet ved enkle geometriske former, som er velegnede til rummelige og moderne indretninger såsom mødeområder og receptioner. Kollektionen er udviklet til at kunne tilbyde meget alsidige og mobile sidde løsninger, der let kan arrangeres og tilpasses.

RBM Wall In består af puffer, lænestole, borde og sammenkoblingsenheder (30 og 60 grader) komplet med skillevægge betrukket med tekstiler. Væggen har en adskillelsesfunktion, der markerer et rum, der er perfekt til en privat samtale.

Design af: Tomek Rygalik, Studio Rygalik.

- Metalben i Black, Steelgrey, Metalsilver
- Standard: Hårde glidere til bløde gulve. Tilvalg: Filtglidere til hårde gulve
- Træben i 5 forskellige bejdse / lakfarver
- 10 mm bordplade - komposit med HPL laminat i White (LW01), Black (LW02), Grey (LW04) eller tempereret mælkeglas (G1)
- Mediaport tilgængelig som tilvalg
- Tekstiler fra Flokk tekstilprogram
- 5 års garanti



# RBM Sam Table

RBM SAM Table passer lydøst ind.

RBM SAM Table er en kollektion af borde på fire elegante træben, der fås i en række størrelser og med en bred vifte af bordpladeoverflader. Vælg mellem lakeret bøg eller egetræ, hærdet glas dækket med et keramisk lag eller laminat (HPL).

Bordkollektionen passer perfekt til et flertal af stole inden for RBM New Collection, herunder RBM Nu, RBM Fan og RBM Chic samt designs som RBM Noor og RBM Bella.

Design af: ITO Design

- Fås i forskellige højder (650/740 mm) med et bredt udvalg af bordplader i forskellige størrelser (1400x700, 1400x900, 2000x900 mm)
- Bordplader i tempereret glas: Milky glass G1, Black G2, Taupe G3 RAL 7044, Grey G4 RAL
- Bordplader i laminat (HPL) (Extended): LW01 White, LW02 Black, LW04 Grey
- Glidere på bordben: Hårde til bløde gulve (standard), Bløde glidere til hårde gulve, Teflon glidere (universal)
- 5 års garanti



SAM 3



SAM 2



SAM C2



SAM C1



# RBM Seven coatstand

RBM Seven er funktionelt design, der tilføjer et særpræg og karakter til ethvert moderne interiør. RBM Seven er en tankevækkende stumtjener fremstillet i stål af høj kvalitet og fås i flere glade farver.

De ekstra kroge i kontrast farver giver et sjovt spil, der forbedrer RBM Sevens originalitet. Bøjlen er et fremragende designelement, der passer ind i hjemmet såvel som kontoret.

Design af: Thomas Rygalik. Studi Rygalik

- Fremstillet i holdbart stål af høj kvalitet og fås i flere glade farver at vælge imellem
- Farver på stand: Black (RAL 9005), Steelgrey, Beige-green (RAL 1000), Orange (RAL 2012), Turquoise (RAL 6034), Grey (RAL 7005), White (RAL 9016)
- Farver på kroge: Black (RAL 9005), Steelgrey, Beige-green (RAL 1000), Orange (RAL 2012), Turquoise (RAL 6034), Grey (RAL 7005), White (RAL 9016)



RAL 6034



RAL 1000



RAL 2012





# Amazonas

by Claesson Koivisto Rune



The table Amazonas is designed by Claesson Koivisto Rune. The concept for the Amazonas table series originated when Eero Koivisto saw aerial photographs of the Amazon rain forest where the tree crowns created a dense ceiling. Koivisto wanted the tables to be poetic and thought provoking. Some of the revenue from the Amazonas tables goes to the Children's Rainforest, a Swedish not-for-profit organization working to preserve the rain forest and animals in Central America. The tables are sold as a set in three different shades of green. They can be placed partly overlapping.

"When I was creating Amazonas I was thinking a lot about environmental issues. As a designer you can try to create an environmentally sustainable quality product that people don't want to throw away. That's why Amazonas is a mono-material – in this case steel – that is 100 percent recyclable. In addition, some of the money from every table sold goes to a project to save the rain forests", says Eero Koivisto

## Suitable workspaces

Reception area, Coffee meeting, Small meeting room,  
Creative Room, Fast meeting & charge area

## Arguments

- The Nordic Ecolabel or Nordic swan
- Some of the revenue from the Amazonas tables goes to the Children's Rainforest, a Swedish not-for-profit organization working to preserve the rain forest and animals in Central America

OFFECCT



## Bop Wood by Knudsen Berg Hindenes



Bop is a series of chairs developed by Offecct in collaboration with Norwegian design bureau Knudsen Berg Hindenes. Originally, Bop was designed for USF Verftet, an arts arena for music, theater, film and modern art in Bergen, Norway. USF was established in 1993 and is an important actor within arts and culture in Bergen and Norway with the aim of collaborating, strengthening and participating in the development of culture and creativity.

The chair has since then further developed and is available with elegant wooden legs stained in whitepigmented oak. 2016 Bop Wood became a serie with a bar stool. Also that one with legs in massive wood. Bop lives up to the high standards of comfort, durability and adaptability required of a concert chair, but fits perfectly well in other public interiors as well.

---

### Suitable workspaces

Reception area, Coffee meeting, Meeting Point,  
Creative room, Fast meeting & charge area, Informal meeting, Bar area

### Arguments

- The Nordic Ecolabel or Nordic swan
- Durability
- Comfort



OFFECCT



# Carry On by Mattias Stenberg



OFFECCT

Carry On is a portable seating solution that works perfectly by itself but also as a complement to other products.

Carry On is designed by Mattias Stenberg who has a strong belief in the need of flexible working places in the public space.

Carry On is not only physically flexible; it also signals to the user how it should be used by the handle on top.

Carry On has round but simple forms and combines traditional materials and craftsmanship with contemporary design and functions. It gives a tailored impression with stitching that communicates good craftsmanship.

## Suitable workspaces

Reception area, Coffee meeting, Meeting Point, Break out

Creative room, Fast meeting & charge area, Bar area, Think Tank, Open work station

## Arguments

- Iconic
- The Nordic Ecolabel or Nordic swan
- Leather handle
- Carry On tells the user how it can be used thanks to its oversized handle, but it also signals a desire for creativity in how we think and work



# Cornflake

by Claesson Koivisto Rune



High compressed veneer seat. Fully upholstered in fabric or leather. Chrome legs. Standard leather - Elmo Soft.

---

### Suitable workspaces

Reception area, Coffee meeting, Meeting Point, Creative room, Fast meeting & charge area, Informal meeting, Bar area

### Arguments

- The Nordic Ecolabel or Nordic swan
- Seat in laminated wood
- Frame in OFFECCT Flexicolor

OFFECCT



## Ezy Low by Christophe Pillet



In 2014 Christophe Pillet and Offecct launched the comfortable and timeless collection Ezy. Originally designed for the famous Pullman Paris Eiffel Tour Hotel, the collection is now supplemented with a new easy chair.

“Instead of making something strange, visible and loud, I wanted to make something very normal, simple and elegant. The purpose of the Ezy collection was to make a super functional, normal and long lasting design”, says Christophe Pillet about the origin of the Ezy collection.

The successful series is now extended with a new model, a larger, inviting easy chair. The easy chair is available with or without a returnable base.

---

### Suitable workspaces

Coffee meeting, Meeting Point, Break out , Small meeting room, Board meeting area, Creative room, Fast meeting & charge area, Think Tank, Open work station

### Arguments

- OFFECCT Flexicolor
- Frame in metal with molded cold foam
- High comfort



OFFECCT



# Font by Matti Klenell



OFFECCT

Sofa system designed for Swedish Nationalmuseum

Nationalmuseum, which originally opened in Stockholm in 1866, was reinaugurated in 2018 after a five-year renovation. Overall responsibility for the museum's new restaurant interior was given to Klenell.. When the time came to develop a flexible sofa that for the restaurant interior, Klenell chose to work with Offecct – and the result is Font.

“Font is based on a simple form with a round backrest, which gives the furniture its graphic expression and character, and indeed also inspired the name. The challenge was to achieve the right height and softness, and also a construction that enables you to use Font in a context outside of the museum,” Matti Klenell explains.

---

### Suitable workspaces

Elevator lobby, Work bench, Reception area, Coffee meeting, Meeting point, Break out, Creative room, Fast meeting & charge area, Think tank, Open work station

### Arguments

- Flexible
- Table top in Valchromat® lacquered grey, Ø300 mm
- Frame in OFFECCT Flexicolor



# Kali by Jasper Morrison



The manufacturing of this functional and durable chair is part of Offecct's collaboration with the organisation ECONEF, who works towards developing a much needed orphanage in northern Tanzania, Africa.

"The chair Kali was designed with a somewhat low technical aspect to allow the future possibility of it being produced locally later on. The character of the chair is I think slightly educational without being boring I hope, and necessarily designed to have a long life", says Jasper Morrison.

A part of the revenue from each sold Kali will go directly to ECONEF orphanage in order to continue developing and improving the children's environment.

---

## Suitable workspaces

Coffee meeting, Meeting point, Break out, Small meeting room, Board meeting area, Creative Room, Fast meeting & charge area, Think tank, Open work station

## Arguments

- Charity
  - Design / Jasper Morrison
  - User friendly
- 



## Lite By Broberg Ridderstråle



Lite is a stackable chair and armchair designed by Broberg & Ridderstråle. Lite is the result of a design brief from Offecct, where the assignment was to develop a stackable chair that combined pleasing aesthetics with rational function and design. The result was a chair characterized by a thin profile and a wide arched back. Lite combines an attractive design with the stringent requirements of a stackable chair - it is easy to transport and to stack, as well as space-efficient and durable.

"Stackable chairs are often narrow and characterized by a slightly anxious expression. We wanted to create a chair with an inviting wide back that nevertheless could be placed close together", says Mats Broberg from the designer duo Broberg & Ridderstråle.

---

### Suitable workspaces

Conference, Meeting point, Break out, Small meeting room, Creative room, Fast meeting & charge area

### Arguments

Lite can be fitted with accessories such as an armrest and a foldable writing tablet. It is possible to connect multiple chairs with a linking device. Lite can also be equipped with removable upholstery for the back and seat, where the removability makes it possible to use the chair also when the upholstery is being cleaned.



OFFECCT





# Lucy by Lucy Kurrein



“Lucy is a modular sofa system based on individual seats – something that greatly facilitates the furnishing of a lobby, for example. The idea was a soft and inviting piece of furniture, so much of the work involved ensuring comfort and shape permanence”, says Lucy Kurrein.

Lucy is upholstered with lacquered frame.

## Suitable workspaces

Elevator lobby, Work bench, Reception area, Coffee meeting, Meeting point, Break out, Creative room, Fast meeting & charge area, Think tank, Open work station

## Arguments

- Can be upholstered in fabric or leather
- Is based on individual seats which simplifies the furnishing
- The frame is available in black, silver or white lacquer alternative in Offecct Flexicolor



OFFECCT



# Maki by Jin Kuramoto



OFFECCT

A solitary and social icon based on minimalism and diversity. A strong and iconic shape that stands out in every room and at the same time a flexible and social team player designed to be combined in different formations. Maki easy chair has a simple, innovative and self-evident form offering plenty of possibilities.

The chair has a strong and symbolic shape, while being flexible in applications and functions. It can be used to work, rest, meet and wait – as a lone icon with a strong personal presence or together in different formations”, says Jin Kuramoto.

The unconventional shape with an open hollow space in the back is inspired by a maki roll – a production challenge requiring Offecct’s craftsmanship.

---

### Suitable workspaces

Elevator lobby, Work bench, Reception area, Coffee meeting, Meeting point, Break out, Creative room, Fast meeting & charge area, Think tank, Open work station

### Arguments

- Flexible
- Storage in backrests
- Frame in OFFECCT Flexicolor



## Moment by Khodi Feiz



OFFECCT

Moment is an easy chair that supports different types of activities like reading a newspaper, working or having a light meal. The easy chair is made to invite the user to sit down for a moment, to take a break, to work or do something else. Khodi Feiz is inspired by three concepts in his designs: clarity, concept and context, which is obvious when it comes to the easy chair Moment, with its clear design language, strong concept and adaptability to different settings. Khodi Feiz got the original inspiration for Moment from old school desks made up of a wooden chair with a table attached on the side, which gave Feiz the idea to give the easy chair a specific function.

"The cooperation with Offecct is very rewarding, particularly due to our long-lasting relationship which means that we as designer and producer understand each other's nuances and how we work", says Khodi Feiz.

### Suitable workspaces

Reception area, Coffee meeting, Meeting point, Break out, Bar area, Creative room, Fast meeting & charge area, Bar area, Think tank, Open work station

### Arguments

- The Nordic Ecolabel or Nordic swan
- Table integrated
- Frame in OFFECCT Flexicolor



## Murano by Luca Nichetto



OFFECCT

Murano is an equally pretty easy chair which hugs your body with a surprisingly high comfort. The backrest and seat are designed so that you can vary the seat position from active to more relax. In the relaxed situation, you also get more contact with the armrests.

Except of the incredibly high level of comfort, Murano also offers the possibility of hanging a jacket or a computer bag on the backrest.

Murano is upholstered with lacquered frame.

---

### Suitable workspaces

Reception area, Coffee meeting, Meeting point, Break out, Bar area, Creative Room, Fast meeting & charge area, Think tank, Open work station

### Arguments

- Can be upholstered in fabric or leather
- Is highly comfortable
- Offers the possibility of hanging a jacket or a bag on the backrest
- Reflects today's needs of "work and relax where you sit"
- The frame is available in black, silver or white lacquer alternative in Offecct Flexicolor



## On Point by Mattias Stenberg



“On Point is designed to allow full contact between up to eight people around it, while it’s also perfect for more private and intimate gatherings among a few individuals. It’s also a way of creating a micro architecture in the room, with the tree’s natural ceiling that makes us feel pleasantly enwrapped and comforted”, says Mattias Stenberg.

On Point High, has an upholstered frame with a table top in white-pigmented oak. The center module in the middle of the table top is in lacquered MDF. It is available in different dimensions and makes it possible to fit different sizes of plants into the table. The tables heights make it possible to choose between standing or sitting on a bar stool.

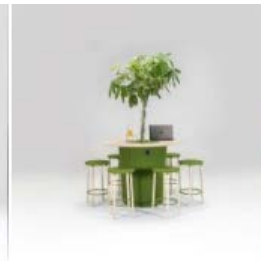
### Suitable workspaces

Reception area, Coffee meeting, Meeting point, Break out

Creative room, Fast meeting & charge area, Bar area, Think tank, Open work station

### Arguments

- Can be upholstered in fabric or leather
- Can be equipped with a powerbox
- Fits up to eight people
- The center module is available in three different sizes, see images below



# Osaka

by Teruhiro Yanagihara



OFFECCT

A landscape of furniture, inspired by Japanese stone gardens. The simplest forms and materials, reflecting each other and creating a jigsaw puzzle expressing both precision and clarity. Teruhiro Yanagihara's Osaka is all about reducing in order to find the core of the product.

The elements of Osaka are like reflections of each other, jigsaw pieces that can be combined in different ways. They are neat and easy to furnish with in different spaces – in a large entrance hall or a smaller room for a quick, spontaneous meeting. Ottomans and tables are both suitable for an active and engaging conversation. Furthermore, the fabric used has a positive effect on the room's acoustics whilst the simplistic shape of the pieces mean they are easy to reupholster in line with our Offecct Lifecircle philosophy.

---

### Suitable workspaces

Reception area, Coffee meeting, Meeting point, Break out

Creative room, Fast meeting & charge area, Bar area, Think tank, Open work station

### Arguments

- Acoustics performance
- Integrated USB or electricity
- Many fabric options for base



## Pal by Claesson Koivisto Rune



The easy chair Pal is designed by Claesson Koivisto Rune for the luxury hotel Nobis Hotel in Stockholm. The hotel's 201 rooms are of varying sizes and one of the challenges for Claesson Koivisto Rune and Offecct in working with the hotel's interior was to develop an easy chair that would fit well in the larger as well as in the smaller rooms. Translating the idea into reality was a demanding task for both Claesson Koivisto Rune and Offecct, and after some intense research and development the easy chair Pal was developed, combining two chairs in one in a cunning way.

Depending on where the legs are mounted Pal can either be a larger and lower chair with a lounge character, or a smaller chair with a higher backrest. The same pair of legs is used for both versions of the chair. This possibility has been achieved through a carefully developed seat that can be turned in two directions. The larger lower version is characterized by some sharp edges. The smaller and higher version of Pal is characterized by a more rounded radius. The inspiration behind the name Pal simply comes from the English word for a friend – or a pal.

### Suitable workspaces

Reception area, Coffee meeting, Meeting point, Break out, Creative room, Fast meeting & charge area, Think tank, Open work station

### Arguments

- The Nordic Ecolabel or Nordic swan
- Frame in OFFECCT Flexicolor
- Good price point



OFFECCT



## Phoenix by Luca Nichetto



OFFECCT

Luca Nichetto's new chair Phoenix luminously represents the Lifecircle philosophy that is the soul of Offecct. Every detail of the chair is carefully conceived, thought through, purposefully designed and crafted for a long, sustainable and flexible life cycle. The fruit of this development process is a chair of original elegance and contemporary timelessness.

The look of Phoenix is derived from a recycled aluminum frame with a trademark Y-shaped base. The upholstered parts can be easily removed and replaced when needed — or when the client wants a new color or material for novel functions and/or styles. The result is a brand new chair whose used parts are recycled.

This perpetual life cycle inspired the name for Phoenix — the bird in antique mythology that keeps rising from its own ashes.

### Suitable workspaces

Coffee meeting, Meeting point, Creative room, Fast meeting & charge area, Think tank, Open work station, Informal meeting.

### Arguments

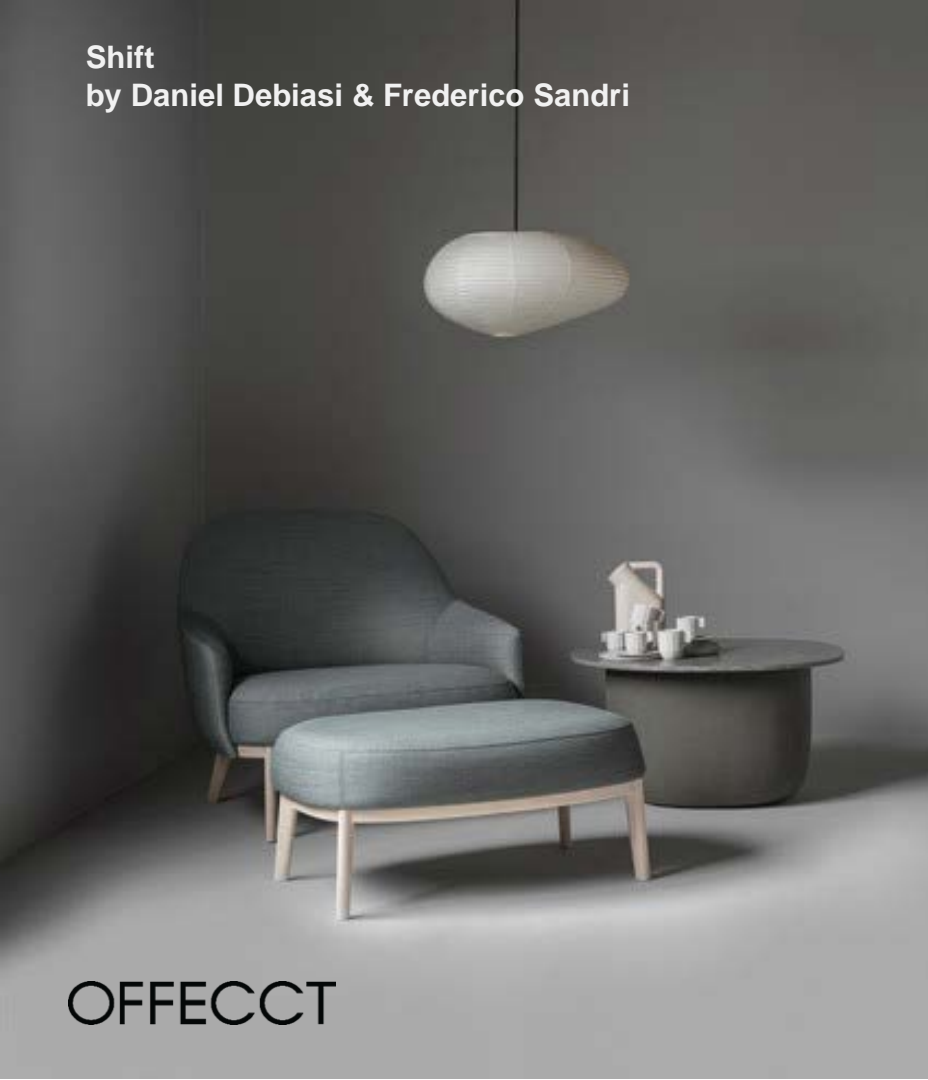
- Lifecircle philosophy
- Recycled aluminum frame
- Many options
- Frame in OFFECCT Flexicolor





# Shift

by Daniel Debiasi & Frederico Sandri



OFFECCT

"The originality of the armchair is not only its ability to completely change the atmosphere of a lobby or lounge by simple means in the form of a seat and three different backs. But it also offers the possibility to easily change the upholstery and renew the armchair. As people work more in public places, the need for easy upgrades increases", says Daniel Debiasi.

Shift is an exceptionally flexible armchair, through the different heights of the backs, allows everyone to both focus completely on their work and to rest completely. The backrests can be replaced and renewed as needed, according to Offecct Lifecircle. It also offers architects tools to create sustainable solutions. The seat is the same for all designs.

## Suitable workspaces

Reception area, Coffee meeting, Meeting point, Break out,  
Creative room, Fast meeting & charge area, Think tank, Open work station

## Arguments

- Wood frame
- Many options / high,low,classic or stool
- Frame in OFFECCT Flexicolor



## Spoon by Monica Förster



The easy chair Spoon designed by Monica Förster is in many ways an easy piece of furniture: easy to move, easy to vary, easy to combine and easy to apply in different surroundings and environments. Spoon gives a tight impression, but is both comfortable and nice to sit in. The generous seat gives an embracing feeling with support for the arms. The back is covered with textile.

The lines of the easy chair are emphasized by a frame in a reflecting material. The choice of material and form brings the mind to sports and movement. Spoon fit well into both public spaces and home environments. Several chairs around a table provide a nice venue for the smaller meeting, and alone it becomes comfortable reading corner or TV furniture. Despite the organic and tight form it has a soft expression, tastefully complementing furniture with straighter lines.

### Suitable workspaces

Reception area, Coffee meeting, Meeting point, Break out,  
Creative room, Fast meeting & charge area, Think tank, Open work station

### Arguments

- The Nordic Ecolabel or Nordic swan
- Frame in OFFECCT Flexicolor
- Good price point



## Soundwave Acoustic panels



OFFECCT

### Acoustic panels

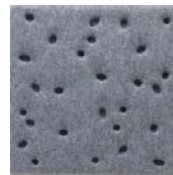
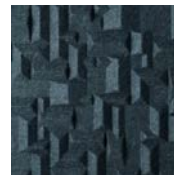
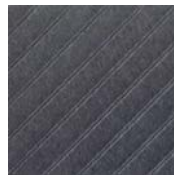
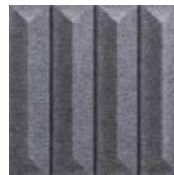
Offecct offers a wide range of sound absorbing panels designed by our renowned designers. The strong collection Soundwave® is a well-known collection of modern acoustic wall panels that apart from its acoustic properties also brings character to the interior.

### Suitable workspaces

Reception area, Coffee meeting, Meeting point, Break out, Creative room, Fast meeting & charge area, Think tank, Open work station

### Arguments

- The Nordic Ecolabel or Nordic swan
- Good Acoustics performance
- Good price point
- Europost fabric on some panels



# Waka

by David Trubridge



OFFECCT

Waka, a seating furniture to drift away on. Waka is a place for meetings, or for rest where you can let your mind drift away for a moment.

Originally developed in Offecct Lab, Waka is now joining our standard collection. The furniture is derived from the lines in a boat construction and gives the impression of something that floats, something dreamlike that you can drift away on", says David Trubridge. Waka can be placed in an open office landscape, or can stand as a beautiful, imaginative solo piece in a lobby or reception area.

"This is a combination of industrial design and craftsmanship that reflects Offecct's design philosophy – a product that is both eye-catching and functional", says Offecct's brand manager Maria Olofsson.

---

### Suitable workspaces

Reception area, Coffee meeting, Meeting point, Break out, Creative room, Fast meeting & charge area, Think Tank,

### Arguments

- Design / David Trubridge
- Only available in Divina family fabric from Kvadrat
- A piece of art



## Young by Michael Young



OFFECCT

Sofa and easy chair for urban spaces. When space is scarce there is no room for errors and furniture needs to be able to deliver more than good looks – and this is exactly what the Young sofa and easy chair by Michael Young do.

Making a sofa that's ideal for two people to socialise and also be able to find some privacy in, is a delicate equation where the proportions need to be just right. Add great comfort and style and you have Young by British designer Michael Young, who dives into the Swedish design sensibility in his first collaboration with Offecct.

Every angle and element in this sofa and easy chair has been carefully thought out. Quilted textile covers the soft seating, which rests on a delicately shapen wooden frame.

---

### **Suitable workspaces**

Reception area, Coffee meeting, Meeting point, Break out, Creative room, Fast meeting & charge area, Think tank,

### **Arguments**

- Fabric Kvadrat/Febriks Uniform on the outside and Kvadrat/Febriks Triangle on back and seat.
  - Legs in white pigmented massive ash
- 



## Wind by Jin Kuramoto



Jin Kuramoto has designed a new side table with his same trademark irregular, organic shapes. The table comes in two heights, manufactured in a monochrome, stone-resembling material.

---

### Suitable workspaces

Reception area, Coffee meeting, Small meeting room, Lounge  
Creative Room, Fast meeting & charge area

### Arguments

- Easy to fit in
- Exclusive
- Tabletop in grey Valchromat



# Avignon

by Christophe Pillet



OFFECCT

"I don't think there should be any difference between home and contract furniture, it's just that you are sitting in one context which is more public than the other. Sitting on a cushion regardless of where you are, should still offer you the same experience and comfort", says Christophe Pillet.

Avignon, are characterised by the familiar design language that Christophe Pillet is known and praised for: no unnecessary frills and a relaxed elegance matched by pleasant comfort.

---

### Suitable workspaces

Reception area, Coffee meeting, Meeting point, Break out, lounge  
Creative room, Fast meeting & charge area, Think tank,

### Arguments

- Can be upholstered both in fabrics or leather.
  - Frame possible in Offecct Flexicolor.
- 



# Archipelago by Michael Sodeau



OFFECCT

"The idea of Archipelago was to create a series of surfaces almost like small islands that furniture could be arranged around. The tables are made using a craft based process of production, with attention to details such as angled edges and the use of several different diameters.

Archipelago is pared back in its expression, unwanted and unnecessary parts are removed, reducing thickness so everything has a very light feel to it", says Michael Sodeau.

---

### Suitable workspaces

Reception area, Coffee meeting, Meeting point, Break out, Lounge  
Creative room, Fast meeting & charge area, Bar area

### Arguments

- Equipped with castors
- Fits equally for use in the ever changing environment of an office, as well as in the privacy of your home. Alone or in a group, as a side table or a coffee table
- Available in three sizes, in three different heights





## Circus by Formfjord



OFFECCT

The main idea when Formfjord developed Circus was to think not only of the product they were developing, but also the whole living space where life happens. Formfjord wanted to see the whole living space as an arena, a circus.

"Circus defines the room and sets the atmosphere – it even changes the behavior of the room. Creating a playful design makes the living room a wonderful place", says Formfjord.

---

### Suitable workspaces

Reception area, Coffee meeting, Meeting point, Break out, Lounge  
Creative room, Fast meeting & charge area, Bar area

### Arguments

- The Nordic Ecolabel or Nordic swan
- Frame in OFFECCT Flexicolor



## Satellite by Richard Hutten



OFFECCT

Satellite is an easy chair for activity based spaces, a spinning easy chair for a digital lifestyle with high comfort and round playful features.

"Architects always draw circles very fast to indicate where to position chairs on their floor plans. I thought that was a nice gesture so I drew a circle and said that it should be the top view of the chair. To me the circle is the most elegant form, there are no bulky sides and it can go in all directions which means it's never out of place", says Richard Hutten.

---

### Suitable workspaces

Reception area, Coffee meeting, Meeting point, Break out, Lounge,  
Creative room, Fast meeting & charge area, Bar area, Think tank, Open work station

### Arguments

- Table integrated on swing
- Frame in OFFECCT Flexicolor



## Solitaire by Alfredo Häberli



Solitaire easy chair is an upholstered chair with an organic shape that is designed in one piece by Alfredo Häberli. One of Solitaire's armrests is like an integral tabletop, for reading, writing or as a side table. The chair is equally suitable for the home as for the dynamic workplaces.

For Alfredo Häberli, it is extremely important that furniture encourages activity and movement. The way people work today is different from how they used to. This imposes new demands on our surroundings. Solitaire is a stable piece of furniture with different possibilities combining function and form.

---

### Suitable workspaces

Reception area, Coffee meeting, Meeting point, Break out, Lounge,  
Creative room, Fast meeting & charge area, Bar area, Think tank, Open work station

### Arguments

- Table integrated on swing
- Frame in OFFECCT Flexicolor

OFFECCT



# Bond

by Jean-Marie Massaud



Bond is a conference table designed by Jean-Marie Massaud. The name Bond refers to the possibility to concatenate and create a friendship bond with someone. This sums up the thought behind the series. Its simple and soft form invites people to meet. The design is minimalistic not to take focus from the individual. The elegant, modern cut and the clean form are modest yet have a self-evident attitude.

“The thought behind Bond was to create an inviting piece of furniture that did not claim too much attention but still had attitude. Everything is thought through in detail - the proportions, the quality in the lines. Bond does not need to prove anything. It is simply self-evident. It is everything you are”, says Jean-Marie Massaud.

---

## Suitable workspaces

Meeting room, Meeting point, Canteen

## Arguments

- Frame in OFFECCT Flexicolor
- Tabletop in white laminate, white stained oak laminate with beveled edges or white compact laminate with black core.
- Frame in chrome.



flokk

[flokk.com](https://flokk.com)

HÅG • PROFIM • RH • GIROFLEX • BMA • OFFECCT • RBM