

Furniture with a mission:

Design and manufacturing process

New products and upgrades



OFFECCT

“Offecct is a design company that is not only passionate about how its products look, but perhaps even more about what they mean. What deeper significance do they have and what do they bring to the users, architecture and society in general?

Thanks to its long-term approach to design, Offecct is a company that launches interesting and relevant products year after year. Always focusing on people, architecture, high quality and sustainability. This is furniture with a mission.”

Eero Koivisto, Designer and Architect

The world is full of products, and at Offecct we don't want to contribute to the excess – unless the furniture we make can in some way add genuine value to people, architecture and society.

This is why we always demand that our products have that magical, elusive spark that makes the world a little better. That they stir the senses, heart and intellect – and that, in short, they are worth loving.

That's our mission – and our passion!

This year we've created exciting fusions between Scandinavia and Japan through our collaborations with Tokyo-based designers Teruhiro Yanagihara and Jin Kuramoto. We have had the privilege to re-edit a design classic from Verner Panton and developed new design and upgrades through our collaborations with David Trubridge, Mattias Stenberg, Daniel Debiasi and Federico Sandri.

We became part of the Norwegian group Flokk in 2017, and this has given us the opportunity to build upon the areas in which we are already excelling. With the help of our design council we are now nurturing and building on the creative culture that is part of our DNA.

A topic we want to discuss in even more detail is our products' journey from concept to reality. We want to emphasise the importance of the combination of global design, local craftsmanship and the collaboration between world-leading designers and our employees in Tibro, Sweden, the people who actually make the products in our factory. Without them, there would be no magic.

Together we continue to offer innovative design on the planet's terms. Our mission of creating furniture for a better, healthier and greener world is more important than ever before.

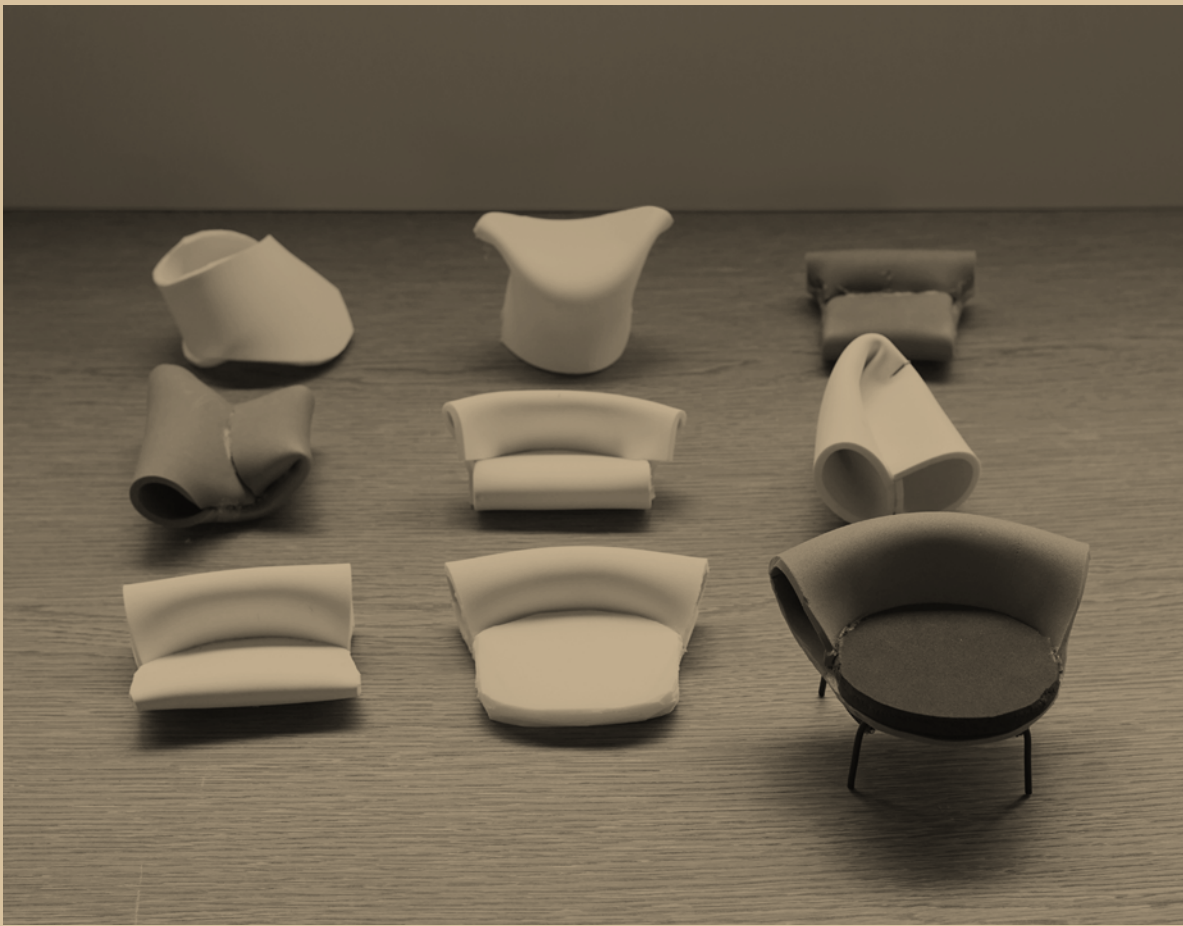
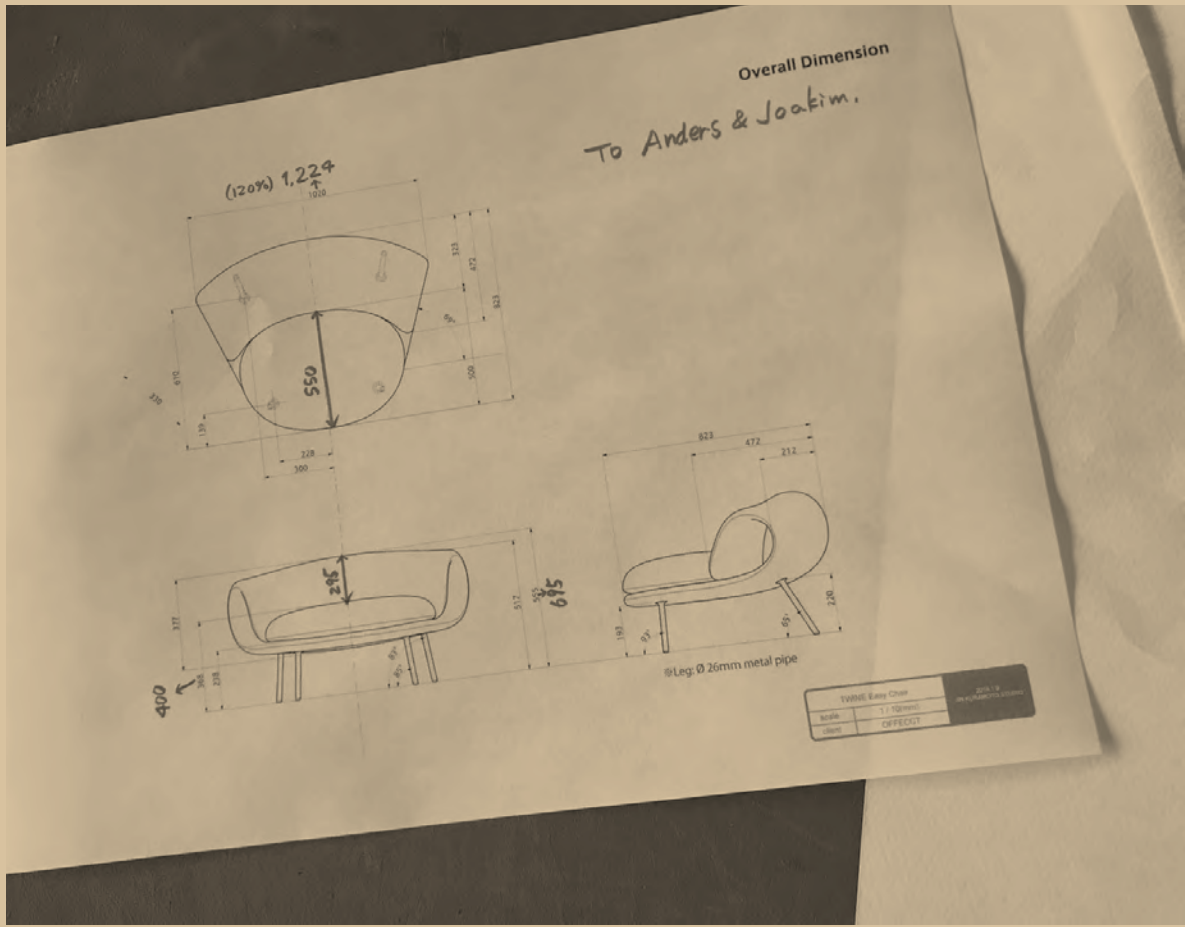
Maria Olofsson Karemyr, Brand Manager, Offecct

Design process:	
Jin Kuramoto and Teruhiro Yanagihara, Tokyo	9
New products and upgrades 2020:	
Maki by Jin Kuramoto	18
Osaka by Teruhiro Yanagihara	20
Waka by David Trubridge	24
Carry On by Mattias Stenberg	26
Shift Wood by Daniel Debiasi & Federico Sandri	28
Spiegel Panel by Verner Panton	30
Manufacturing process:	
Offecct, Tibro	33
Designers of new products and upgrades 2020	41
Collection 2020	42
Our design team 2020	46

Design process:

**Jin Kuramoto
Tokyo, Japan**





“The concept of ‘diversity’ is important in Japanese culture, and also for me when I designed Maki easy chair. I think chopsticks are a good example, a very simple product that can be used in many different ways.

The process began in the usual way, with me working practically with the material to find a shape, and when rolling up a sheet of polyurethane I realised how to proceed.

The finished chair has a strong and symbolic shape, while being flexible in applications and functions. It can be used to work, rest, meet and wait – as a lone icon with a strong personal presence or together in different formations.

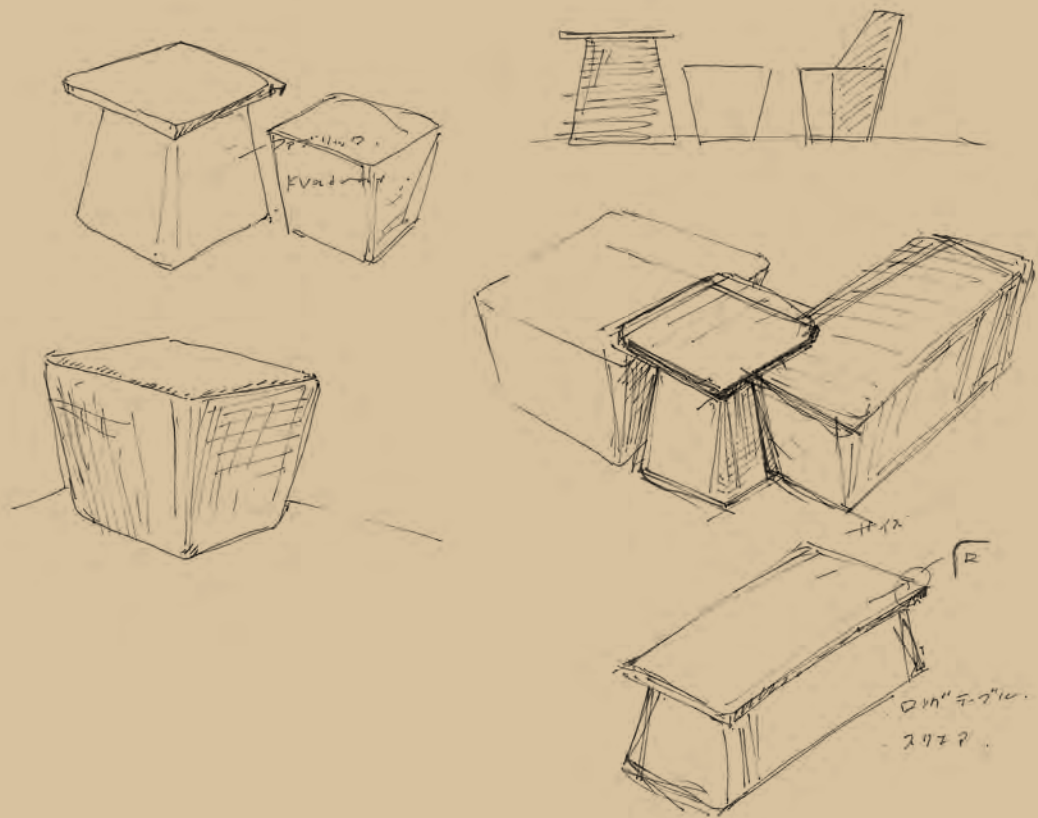
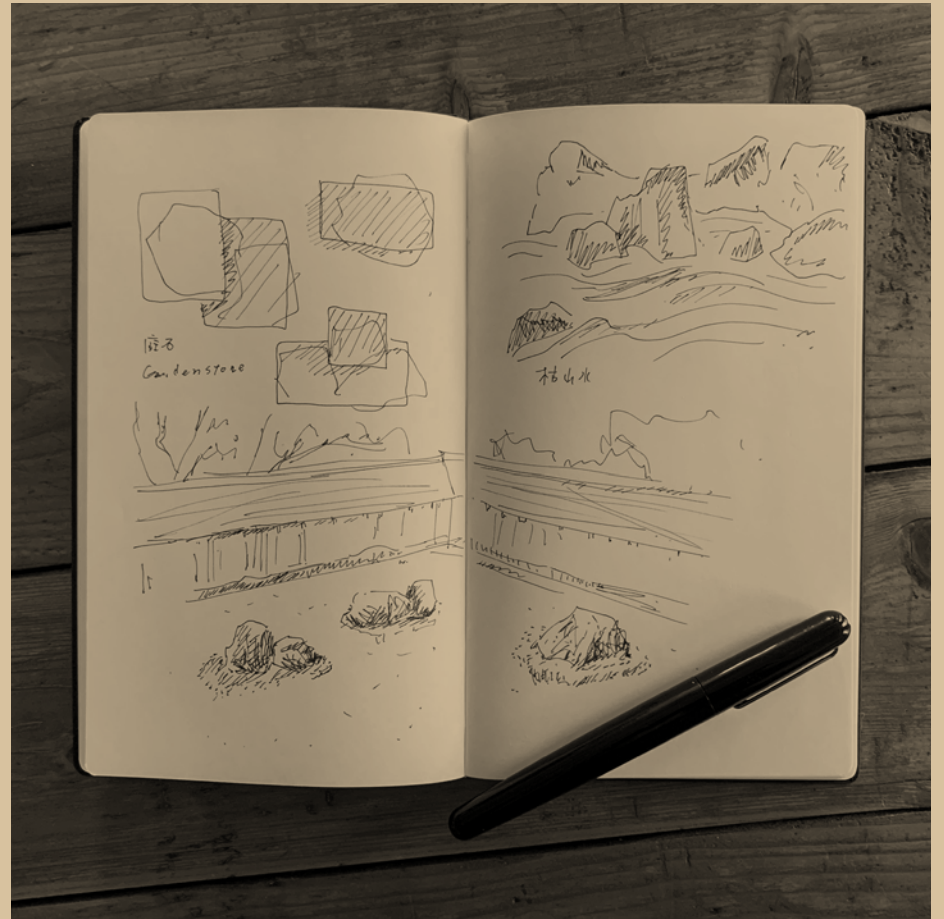
The form is based on minimalism and rationalism, a design culture that is common for Japan and Scandinavia, while its scope of use is expanding towards an individually that I think is increasingly sought after in various public environments.”

Jin Kuramoto, Designer

Design process:

**Teruhiro Yanagihara
Tokyo, Japan**





“I have had a dialogue with Offecct for many years and the idea for this project grew gradually. My background is in spatial design and architecture and I’m always thinking about spaces, rather than about individual objects.

What I saw before me with Osaka was a landscape of furniture, inspired by Japanese stone gardens. One of the challenges was to find the right scale and dimensions to make all the chairs and tables fit together.

All creative processes contain critical elements, but the collaboration with Offecct is always positive and constructive. Just as our collaboration bridges cultural differences between Japan and Scandinavia, I think these products can do the same. The similarity in our design traditions is that we would rather reduce than add to the complexity, in order to find the core of the product.

The process of Osaka has led us to a design where we use the simplest of mechanisms and materials to create products that can be used – and reused – time and time again and around the world.”

Teruhiro Yanagihara, Designer

New products and upgrades 2020:

Maki
by Jin Kuramoto

Jin Kuramoto's Maki easy chair has a simple, innovative and self-evident form, offering plenty of possibilities. A strong, solitary piece with clear iconic potential, designed so that multiple easy chairs can be combined in different formations, in a row or with the seats facing different directions.

The easy chair offers active, flexible seating, which makes it natural to change position. The innovative back can also be used as support while standing. The unconventional shape with an open hollow space in the back – inspired by a maki roll – challenges our production but shows our craftsmanship capabilities.

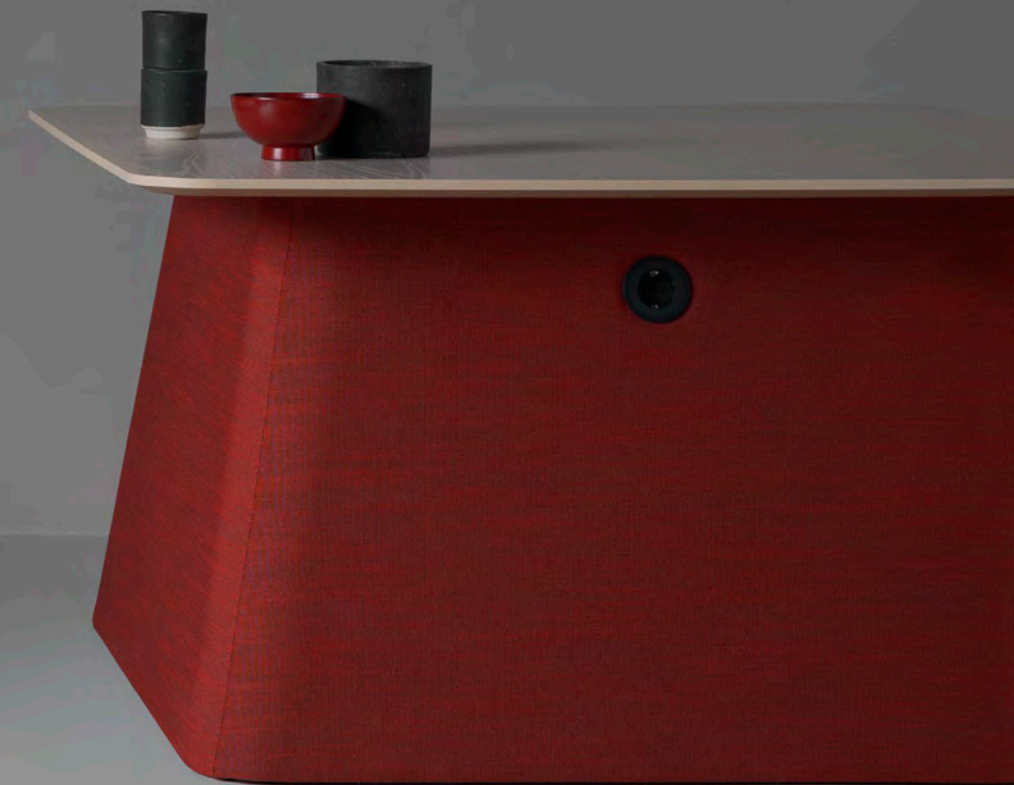
In many ways Maki is an obvious expression for Offecct.



Osaka
by Teruhiro Yanagihara

With Osaka, Teruhiro Yanagihara has created a timeless, simple collection that is a natural ambassador for Offecct's design philosophy. In part, the collection is inspired by footpaths made of cobble stones of different sizes – an organic form that simultaneously exudes precision and clarity.

The elements of Osaka are reflections of each other, jigsaw pieces that can be combined in different ways. They are neat and easy to furnish space with, in a large entrance hall or a smaller room for a quick, spontaneous meeting. Ottomans and tables are both suitable for an active and engaging conversation. Furthermore, the fabric used has a positive effect on a room's acoustics whilst the simplistic shape of the pieces mean they are easy to re-upholster in line with our Offecct Lifecircle philosophy.





Waka
by David Trubridge

Waka was originally developed in the Offecct Lab and is now becoming part of our standard collection. This innovative furniture is designed by David Trubridge and invites to a new open seating type. A place for creative meetings or a place to rest.

The lines take inspiration from boat design and dates back to the 1970s, when Trubridge was studying as a naval architect. The body is almost three metres long, broad at the centre and tapered at both ends, giving it a distinctive character and creates space for several people.

The shell is upholstered with a quilted pattern. Waka can be placed in an open office landscape, or as a beautiful, imaginative solo piece in a lobby or reception area.

A combination of industrial design and craftsmanship that reflects Offecct's design philosophy – a product that is both beautiful and functional.



Carry On
by Mattias Stenberg

Offecct's iconic Carry On is now available as standard with a leather handle. The portable stool can be used by itself or as a complement to other furnishings. It is designed by Mattias Stenberg based on the need for flexible workplaces and interaction in public spaces.

Carry On tells the user how it can be used thanks to its oversized handle, but it also signals a desire for creativity in how we think and work. It has simple, round forms and a tailored impression that marries traditional materials and craftsmanship with modern design and function.

Carry On is completely in line with Offecct's focus on offering solutions for creative activity-based environments.



Shift Wood
by Daniel Debiasi & Federico Sandri

Daniel Debiasi and Federico Sandri's collaboration with Offecct in 2018 resulted in a highly flexible easy chair named Shift. The easy chair – one seat and three different backs – can easily change the expression in a room. The different heights can be used for everything from individual focus on a work task, to pleasant relaxation and creative meetings. As the function can be varied and upgraded, Shift has a long life.

This year Shift is upgraded with a base of solid white stained ash, so its expression can be further varied. Shift is one example of how we are realising our Offecct Lifecircle philosophy, where sustainability is already incorporated during the brief, making it an important building block early on in the design process.



Spiegel Panel by Verner Panton

In 1969, Verner Panton created the iconic interiors for German publisher Der Spiegel in Hamburg. By the Panton family, Offecct has obtained the license right to re-edit the Spiegel acoustic panel true to the original design.

Panton wanted to use all of the available surfaces in the building to create the best possible work environment, so he developed a system of acoustic panels.

The pyramid shape is ideal for absorbing sound, while it also creates an architectonic mark in the room. The concept, form and dimensions follow the original design, but the material and structure have been adapted to modern regulations and standards.

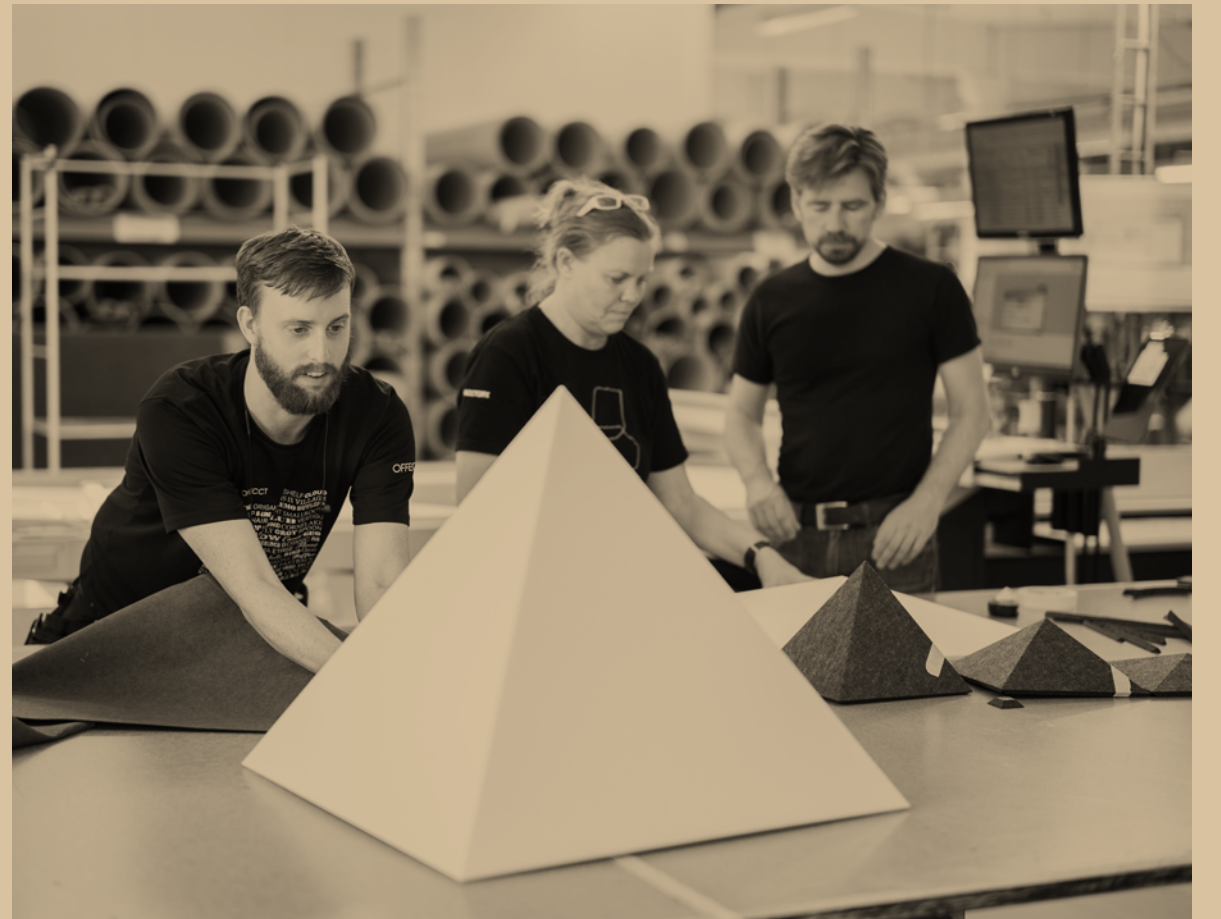
The Spiegel Panel is made of polyester fibre that has been folded to create its form, which means it's lightweight and easy to recycle. It is available in the three original depths. An opportunity for Offecct to give ground-breaking products from design history a new lease of life.



Manufacturing process:

**Offecct
Tibro, Sweden**







Global design. Local craftsmanship. World-class quality.

Our products are transformed from concept to reality at our factory in Tibro – Sweden’s centre for furniture. Our design philosophy may be global, but we achieve world-class quality by ensuring that our entire process, from development to production, takes place locally.

In Tibro, our product developers and craftsmen work with selected designers and architects from around the world. We use local suppliers wherever possible and continuously invest in our own production facilities and expertise of our employees’.

There are many passionate professionals in our factory, all of whom are proud to always deliver the best quality. Thanks to the craftsmen critical eyes and skilled hands, they make products that exceed our customers’ expectations.

In order to meet our high demands, we gather knowledge from the traditional craftsmanship in Tibro and the new challenges we face every day, not least in our Offecct Lab, where we experiment and test new solutions, materials and concepts.

Independent design, product development and manufacturing are at the heart of our business. It is through meticulous care for each individual detail and complete control over the entire process that we create furniture that should last as long as the buildings in which they’re placed.







Designers of our new products 2020:

Jin Kuramoto
Japan

Jin Kuramoto graduated from Kanazawa College of Art in 1999 and founded his studio in Tokyo in 2008. His innovative design focuses on strong, clear expressions, whether he's working with furniture, home electronics, cars or fast-moving consumer goods. His clientele includes the companies Arflex Japan, Toyota, Nikon, Audio-Technica and Honda. He has previously designed the Jin chair, Wind table and Wind room divider for Offecct.

Teruhiro Yanagihara
Japan

Teruhiro Yanagihara founded his company in Tokyo in 2002 to develop his own visions about design. He works with domestic and international clients alike and likes to cross boundaries and cultures to create encounters between design, industry and craftsmanship. He has a strong global presence and has worked for brands such as Pallucco, Sergio Rossi, Wallpaper, Karimoku New Standard and Arita. He has previously designed the Grow sofa for Offecct.

David Trubridge
New Zealand

David Trubridge, based in New Zealand, has a design philosophy that focuses on sustainability and environmental responsibility. This is reflected in his ongoing efforts to test and develop new ecologically sustainable materials. Trubridge has a background as a naval architect, has sailed around the world, and learned to make furniture while working as a forest conservationist. His breakthrough as a designer came in 2001 when Italian design house Cappellini took his Body Raft to the Salone de Mobile in Milan. He has previously created the Membrane acoustic panel with Offecct.

Verner Panton
Denmark

Danish architect and designer Verner Panton (1926–1998) has created some of the 20th century's best-known design objects and interiors. Panton broke with the Danish tradition of working with wood and experimented with new materials in such classics as The Cone Chair, Panton Chair and The Flower Pot Lamp. Panton's ability to combine light, colour and form makes his designs a natural part of our design heritage.

Designers of our upgrades 2020:

Mattias Stenberg
Sweden

Mattias Stenberg is a Swedish designer who studied at the Royal Institute of Technology in Stockholm. In 2010 he founded Studio Vision A&D, which focuses on contemporary architecture and design. Stenberg's work is based on clarity in concept, form and material. His background as an engineer and architect influences the way he works with furniture and lighting, and he describes his furniture as "mini architecture". He has also created the Move On bar stool and On Point table together with Offecct.

Daniel Debiasi & Federico Sandri
Italy

Based in Italy, Daniel Debiasi and Federico Sandri founded their own design studio in 2010. They work in various fields of design ranging from objects to architecture and interiors, and they engage in a continuous dialogue focusing on design, culture and our era. They experiment with different materials and processes, examine the relationship between manufacturing and craftsmanship, and always consider their objects as part of a bigger picture.



Collection 2020

Sofas:



Airberg
by Jean-Marie Massaud



Avignon
by Christophe Pillet



Blocks
by Christophe Pillet



Ezy
by Christophe Pillet



Ezy Wood
by Christophe Pillet



Float High
by Claesson Koivisto Rune



Float High Large
by Claesson Koivisto Rune



Font
by Matti Klenell



Gate
by Claesson Koivisto Rune



Lucy
by Lucy Kurrein



Meet
by Fattorini+Rizzini+Partners



Playback
by Claesson Koivisto Rune



Netframe
by Cate & Nelson



Grandfield
by Christophe Pillet



Smallroom Select
by Ineke Hans



Smallroom Plus Low
by Ineke Hans



Varilounge
by Christophe Pillet



Young
by Michael Young

Easy chairs:



Airberg
by Jean-Marie Massaud



Avignon
by Christophe Pillet



Babled
by Emmanuel Babled



Blocks
by Christophe Pillet



Bond
by Jean-Marie Massaud



Ezy
by Christophe Pillet



Ezy Large
by Christophe Pillet



Ezy Wood
by Christophe Pillet



Float High
by Claesson Koivisto Rune



Float High Large
by Claesson Koivisto Rune



Layer
by Läufer+Keichel



Maki
by Jin Kuramoto



Moment
by Khodi Feiz



Montparnasse
by Christophe Pillet



Murano
by Luca Nichetto



Netframe
by Cate & Nelson



Oyster High & Low
by Michael Sodeau



Oyster Wood High & Low
by Michael Sodeau



Pal High & Low
by Claesson Koivisto Rune



Palma Meeting
by Khodi Feiz



Palma Wood
by Khodi Feiz



Queen
by Olle Anderson



Satellite
by Richard Hutten



Shift Wood Classic, High & Low
by Daniel Debiassi & Federico Sandri



Shift Classic, High & Low
by Daniel Debiassi & Federico Sandri



Solitaire
by Alfredo Häberli



Spoon High & Low
by Monica Förster



Varilounge
by Christophe Pillet



Young
by Michael Young

Chairs:



Bergen
by Hallgeir Homstvedt



Bike
by Monica Förster



Bond
by Jean-Marie Massaud



Bop
by Knudsen Berg Hindenes



Bop Wood
by Knudsen Berg Hindenes



Contour
by Thomas Sandell



Cornflake
by Claesson Koivisto Rune



Ezy High & Low
by Christophe Pillet



Ezy Wood High & Low
by Christophe Pillet



Jacket
by Claesson Koivisto Rune



Jin
by Jin Kuramoto



Kali
by Jasper Morrison



Lite
by Broberg & Ridderstråle



Palma Meeting
by Khodi Feiz



Palma Meeting Wood
by Khodi Feiz



Phoenix
by Luca Nichetto



Quilt
by Olle Anderson



Tailor
by Louise Hederström

Stools:



Bop
by Knudsen Berg Hindenes



Bop Wood
by Knudsen Berg Hindenes



Carry On
by Mattias Stenberg



Cornflake High & Low
by Claesson Koivisto Rune



Ezy
by Christophe Pillet



Move On High & Low
by Mattias Stenberg

Ottomans:



Dune
by Front



Islands
by Jean-Marie Massaud



Osaka
by Teruhiro Yanagihara



Soufflé
by Cecilie Manz



Waka
by David Trubridge

Tables:



Amazonas
by Claesson Koivisto Rune



Archipelago
by Michael Sodeau



Bird
by Broberg & Ridderstråle



Bond
by Jean-Marie Massaud



Circus
by Formfjord



Ezy
by Christophe Pillet



Grip
by Satyendra Pakhalé



Kali
by Jasper Morrison



Lite
by Broberg & Ridderstråle



Markelius 01
by Sven Markelius



Nobis
by Claesson Koivisto Rune



On Point
by Mattias Stenberg



On Point High & Medium
by Mattias Stenberg



Osaka
by Teruhiro Yanagihara



Snowflake
by Claesson Koivisto Rune



Surf
by Maximilian Schmal



Tool
by Studio Irvine



Wind
by Jin Kuramoto

Room dividers:



Cloud
by Monica Förster



Soundsticks®
by Andrea Ruggiero



Wind
by Jin Kuramoto

Acoustic panels/
Soundwave®:



Bella
by 3XN



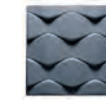
Botanic
by Mario Ruiz



Ceramic
by Thomas Sandell



Ennis
by Frank Lloyd Wright®



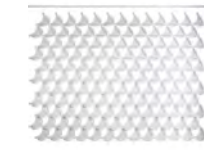
Flo
by Karim Rashid



Geo
by Ineke Hans



Luna
by Teppo Asikainen



Membrane
by David Trubridge



Notes
by Luca Nichetto



Pix
by Jean-Marie Massaud



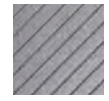
Scrunch
by Teppo Asikainen



Spiegel Panel
by Verner Panton



Sky
by Marre Moerel



Stripes
by Richard Hutten



Swell
by Teppo Asikainen



Village
by Claesson Koivisto Rune



Wall
by Christophe Pillet



Wicker
by Wingårdh & Wikerstål

Additional:



Hanger
by Neri & Hu

O₂asis:



Circus Planter
by Formfjord



Green Divider
by Louise Hederström



Green Islands
by Jean-Marie Massaud



Green Pads
by Luca Nichetto



Green Pedestals
by Front



Grip Vase
by Satyendra Pakhalé



On Point
by Mattias Stenberg



On Point High & Medium
by Mattias Stenberg

Our design team 2020:

3XN, Alfredo Häberli, Andrea Ruggiero, Broberg & Ridderstråle, Cate & Nelson, Cecilie Manz, Christophe Pillet, Claesson Koivisto Rune, Daniel DeBiasi & Federico Sandri, David Trubridge, Emmanuel Babled, Fattorini+Rizzini+Partners, Formfjord, Frank Lloyd Wright®, Front, Hallgeir Homstvedt, Ineke Hans, Jasper Morrison, Jean-Marie Massaud, Jin Kuramoto, Karim Rashid, Khodi Feiz, Knudsen Berg Hindenes, Louise Hederström, Luca Nichetto, Lucy Kurrein, Läufer + Keichel, Mario Ruiz, Marre Moerel, Matti Klenell, Mattias Stenberg, Maximilian Schmahl, Michael Sodeau, Michael Young, Monica Förster, Neri & Hu, Olle Anderson, Richard Hutten, Satyendra Pakhalé, Studio Irvine, Sven Markelius, Teppo Asikainen, Teruhiro Yanagihara, Thomas Sandell, Verner Panton, Wingårdh & Wikerstål.

Offecct seeks to create a more sustainable balance in people's lives, one that has a positive influence on a wider scope; ultimately, the state of the Earth. This is our mission. We call it Offecct Lifecircle.

Offecct's furniture is produced in collaboration with selected architects and designers around the world. It is manufactured in Sweden, using complex materials and environmentally friendly techniques. It often has a unique twist, frequently meeting a previously unknown need. It allows the people of today to relax or, indeed, become energised.

We have showrooms in Stockholm, Gothenburg, Malmö and Tibro, Oslo, Copenhagen, London, Amsterdam and Rotterdam, Düsseldorf and Munich, Milan, New York and Singapore. Since May 2017, Offecct has been a part of the Flokk Group (Norway), an international group that focuses on design and development of furniture for working places and soft seating.

Offecct AB
SE-543 21 Tibro, Sweden
+46 504 415 00
offecct.com

Flokk AS
N-0302 Oslo, Norway
+47 22 59 59 00
flokk.com

Text: David Björklund
Translations: Comactiva Language Partner
Photography: Jonas Winge, Jin Kuramoto Studio,
Teruhiro Yanagihara Studio
Styling: Annaleena Leino
Retusch: Therese Åström
Production: Henrik Nygren Design
Print: Göteborgstryckeriet, Sweden 2020



